

# CoraLite® Plus 488-conjugated Cyclophilin A Monoclonal antibody

Catalog Number: **CL488-67880**

## Basic Information

<b>Catalog Number:</b> CL488-67880	<b>GenBank Accession Number:</b> BC005320	<b>Purification Method:</b> Protein G purification
<b>Size:</b> 1000 µg/ml	<b>GeneID (NCBI):</b> 5478	<b>CloneNo.:</b> 2B11B9
<b>Source:</b> Mouse	<b>UNIPROT ID:</b> P62937	<b>Recommended Dilutions:</b> IF/ICC 1:200-1:800
<b>Isotype:</b> IgG1	<b>Full Name:</b> peptidylprolyl isomerase A (cyclophilin A)	<b>Excitation/Emission maxima wavelengths:</b> 493 nm / 522 nm
<b>Immunogen Catalog Number:</b> AG1120	<b>Calculated MW:</b> 18 kDa	
	<b>Observed MW:</b> 18 kDa	

## Applications

<b>Tested Applications:</b> IF/ICC, FC (Intra)	<b>Positive Controls:</b> IF/ICC : HeLa cells,
<b>Species Specificity:</b> human	

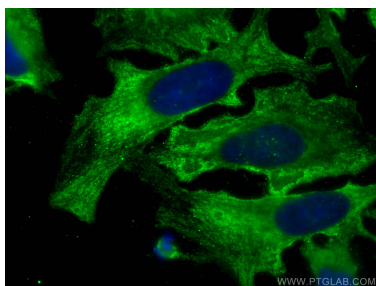
## Background Information

Cyclophilin A, also named as PPIA and Rotamase A, belongs to the cyclophilin-type PPIase family and PPIase A subfamily. PPIases accelerate the folding of proteins. It catalyzes the cis-trans isomerization of proline imidic peptide bonds in oligopeptides. PPIA forms a trimolecular complex with cyclophilin and calcineurins to inhibit calcineurin phosphatase activity. PPIA is incorporated into the virion of the type 1 human immunodeficiency virus (HIV-1) via a direct interaction with the capsid domain of the viral Gag polyprotein and is crucial for efficient viral replication.

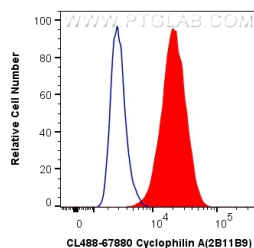
## Storage

**Storage:**  
Store at -20°C. Avoid exposure to light. Stable for one year after shipment.  
**Storage Buffer:**  
PBS with 50% Glycerol, 0.05% Proclin300, 0.5% BSA, pH 7.3.  
Aliquoting is unnecessary for -20°C storage

## Selected Validation Data



Immunofluorescent analysis of (-20°C Methanol) fixed HeLa cells using CoraLite® Plus 488 Cyclophilin A antibody (CL488-67880, Clone: 2B11B9) at dilution of 1:400.



1X10<sup>6</sup> HeLa cells were intracellularly stained with 0.4 ug CoraLite® Plus 488 Anti-Human Cyclophilin A (CL488-67880, Clone:2B11B9) (red), or 0.4 ug CoraLite® Plus 488 Mouse IgG1 Isotype Control (MOPC-21) (CL488-65124, Clone: MOPC-21) (blue). Cells were fixed with 4% PFA and permeabilized with Flow Cytometry Perm Buffer (PF00011-C).