

For Research Use Only

CoraLite® Plus 488-conjugated FKBP5 Monoclonal antibody



Catalog Number: **CL488-67874**

Basic Information

Catalog Number: CL488-67874	GenBank Accession Number: BC042605	Purification Method: Protein A purification
Size: 1000 µg/ml	GeneID (NCBI): 2289	CloneNo.: 3B11F3
Source: Mouse	UNIPROT ID: Q13451	Recommended Dilutions: IF 1:50-1:500
Isotype: IgG2b	Full Name: FK506 binding protein 5	Excitation/Emission maxima wavelengths: 493 nm / 522 nm
Immunogen Catalog Number: AG5514	Calculated MW: 457 aa, 51 kDa	
	Observed MW: 51 kDa	

Applications

Tested Applications: FC (Intra), IF/ICC	Positive Controls: IF : HeLa cells,
Species Specificity: Human, rat, mouse	

Background Information

FKBP5 (Peptidyl-prolyl cis-trans isomerase FKBP5) interacts with functionally mature heterooligomeric progesterone receptor complexes along with HSP90 and TEBP. Unlike the predominant T-cell expression of the mouse protein, FKBP5 is expressed as a 51-kD protein in a variety of tissues but not in brain, colon, or lung (PMID: 9125197).

Storage

Storage:
Store at -20°C. Avoid exposure to light. Stable for one year after shipment.
Storage Buffer:
PBS with 50% Glycerol, 0.05% Proclin300, 0.5% BSA, pH 7.3.
Aliquoting is unnecessary for -20°C storage

For technical support and original validation data for this product please contact:

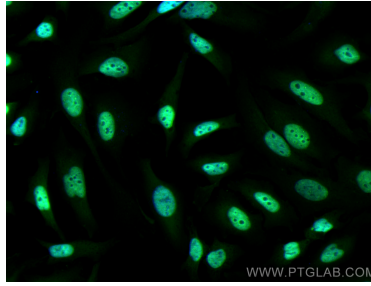
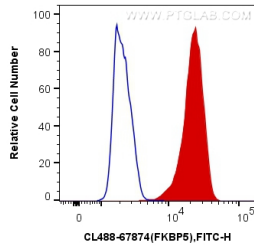
T: 4006900926

E: Proteintech-CN@ptglab.com

W: ptgcn.com

This product is exclusively available under Proteintech Group brand and is not available to purchase from any other manufacturer.

Selected Validation Data



1X10⁶ K-562 cells were intracellularly stained with 0.4 ug CoraLite® Plus 488 Anti-Human FKBP5 (CL488-67874, Clone:3B11F3) (red), or 0.4 ug Mouse IgG2b Isotype Control (CL488-66360-3, Clone: K11B8C4B5) (blue). Cells were fixed with 4% PFA and permeabilized with Flow Cytometry Perm Buffer (PF00011-C).

Immunofluorescent analysis of (4% PFA) fixed HeLa cells using CoraLite® Plus 488 FKBP5 antibody (CL488-67874, Clone: 3B11F3) at dilution of 1:200.