

For Research Use Only

# CoraLite® Plus 488-conjugated Synaptophysin Monoclonal antibody

Catalog Number: CL488-67864

1 Publications



## Basic Information

Catalog Number:

CL488-67864

Size:

1000 µg/ml

Source:

Mouse

Isotype:

IgG1

Immunogen Catalog Number:

AG11803

GenBank Accession Number:

BC064550

GeneID (NCBI):

6855

UNIPROT ID:

P08247

Full Name:

synaptophysin

Calculated MW:

313 aa, 34 kDa

Purification Method:

Protein G purification

CloneNo.:

4E12C4

Recommended Dilutions:

IF-P 1:50-1:500

Excitation/Emission maxima wavelengths:

493 nm / 522 nm

## Applications

Tested Applications:

IF-P, FC (Intra)

Cited Applications:

IF

Species Specificity:

human, mouse, rat, pig

Cited Species:

human

Positive Controls:

IF-P: mouse brain tissue,

## Background Information

Synaptophysin (SYP, also known as major synaptic vesicle protein p38) is a 38-kDa integral membrane glycoprotein that regulates synaptic vesicle endocytosis. It is the most abundant synaptic vesicle protein by mass. Synaptophysin is present in neuroendocrine cells and neurons that participate in synaptic transmission. Synaptophysin is a useful marker for identification of neuroendocrine cells and neoplasms. (PMID: 3010302; 21658579)

## Notable Publications

Author	Pubmed ID	Journal	Application
Rareş-Vasile Traciaru	39595985	Int J Mol Sci	IF

## Storage

Storage:

Store at -20°C. Avoid exposure to light. Stable for one year after shipment.

Storage Buffer:

PBS with 50% Glycerol, 0.05% Proclin300, 0.5% BSA, pH 7.3.

Aliquoting is unnecessary for -20°C storage

For technical support and original validation data for this product please contact:

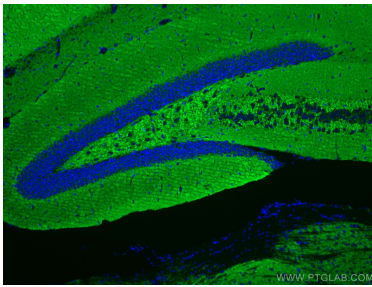
T: 4006900926

E: [Proteintech-CN@ptglab.com](mailto:Proteintech-CN@ptglab.com)

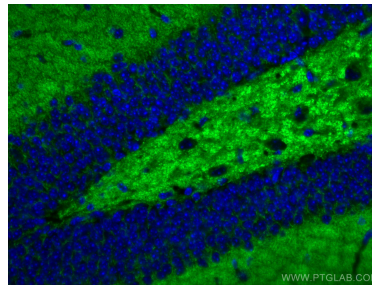
W: [ptgcn.com](http://ptgcn.com)

This product is exclusively available under Proteintech Group brand and is not available to purchase from any other manufacturer.

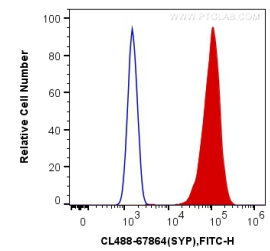
## Selected Validation Data



Immunofluorescent analysis of (4% PFA) fixed mouse brain tissue using CoraLite® Plus 488 Synaptophysin antibody (CL488-67864, Clone: 4E12C4) at dilution of 1:200.



Immunofluorescent analysis of (4% PFA) fixed mouse brain tissue using CoraLite® Plus 488 Synaptophysin antibody (CL488-67864, Clone: 4E12C4) at dilution of 1:200.



1X10<sup>6</sup> PC-12 cells were intracellularly stained with 0.4 ug CoraLite® Plus 488 Anti-Human Synaptophysin (CL488-67864, Clone: 4E12C4) (red), or 0.4 ug Mouse IgG1 Isotype Control (CL488-66360, Clone: T1F8D3F10) (blue). Cells were fixed with 4% PFA and permeabilized with Flow Cytometry Perm Buffer (PF00011-C).