

For Research Use Only

CoraLite® Plus 488-conjugated GSTM1 Monoclonal antibody

Catalog Number: CL488-67862



Basic Information

Catalog Number:

CL488-67862

Size:

1000 ug/ml

Source:

Mouse

Isotype:

IgG2b

Immunogen Catalog Number:

AG3113

GenBank Accession Number:

BC024005

GeneID (NCBI):

2944

UNIPROT ID:

P09488

Full Name:

glutathione S-transferase mu 1

Calculated MW:

181 aa, 21 kDa

Observed MW:

26-28 kDa

Purification Method:

Protein A purification

CloneNo.:

3C5C2

Recommended Dilutions:

IF/ICC 1:300-1:1200

Excitation/Emission maxima

wavelengths:

493 nm / 522 nm

Applications

Tested Applications:

IF/ICC, FC (Intra)

Species Specificity:

human, mouse, rat, pig, chicken

Positive Controls:

IF/ICC : HeLa cells,

Background Information

Storage

Storage:

Store at -20°C. Avoid exposure to light. Stable for one year after shipment.

Storage Buffer:

PBS with 50% Glycerol, 0.05% Proclin300, 0.5% BSA, pH 7.3.

Aliquoting is unnecessary for -20°C storage

For technical support and original validation data for this product please contact:

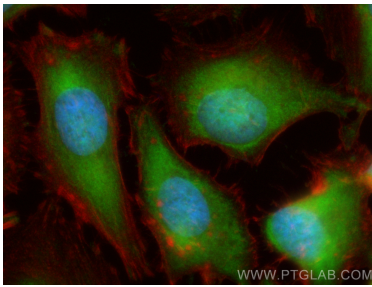
T: 4006900926

E: Proteintech-CN@ptglab.com

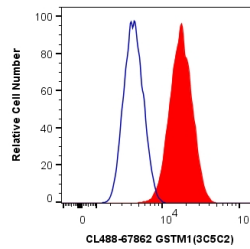
W: ptgcn.com

This product is exclusively available under Proteintech Group brand and is not available to purchase from any other manufacturer.

Selected Validation Data



Immunofluorescent analysis of (-20°C Ethanol) fixed HeLa cells using CoraLite® Plus 488 GSTM1 antibody (CL488-67862, Clone: 3C5C2) at dilution of 1:600, CL594-Phalloidin (red).



1X10⁶ HeLa cells were intracellularly stained with 0.8 ug CoraLite® Plus 488 Anti-Human GSTM1 (CL488-67862, Clone:3C5C2) (red), or 0.8 ug CoraLite® Plus 488 Mouse IgG2b Isotype Control (MPC-11) (CL488-65128, Clone: MPC-11) (blue). Cells were fixed with 4% PFA and permeabilized with Flow Cytometry Perm Buffer (PF00011-C).