

# CoraLite® Plus 488-conjugated CBS Monoclonal antibody

Catalog Number: **CL488-67861**

## Basic Information

**Catalog Number:**

CL488-67861

**Size:**

1000 µg/ml

**Source:**

Mouse

**Isotype:**

IgG2b

**Immunogen Catalog Number:**

AG7008

**GenBank Accession Number:**

BC000440

**GeneID (NCBI):**

875

**UNIPROT ID:**

P35520

**Full Name:**

cystathionine-beta-synthase

**Calculated MW:**

61 kDa

**Observed MW:**

61-63 kDa

**Purification Method:**

Protein A purification

**CloneNo.:**

1E4F10

**Recommended Dilutions:**

IF/ICC 1:50-1:500

**Excitation/Emission maxima  
wavelengths:**

493 nm / 522 nm

## Applications

**Tested Applications:**

IF/ICC, FC (Intra)

**Species Specificity:**

human, rat

**Positive Controls:**

IF/ICC : HeLa cells,

## Background Information

The CBS gene encodes cystathionine beta-synthase, which catalyzes the first irreversible step of transsulfuration. The CBS enzyme is a homotetramer of 63-kD subunits and requires pyridoxal phosphate and heme for activity(PMID:11230183). CBS protein is localized in most areas of the brain, but predominantly in the cell bodies and neuronal processes of Purkinje cells and Ammon's horn neurons(PMID:12588964).

## Storage

**Storage:**

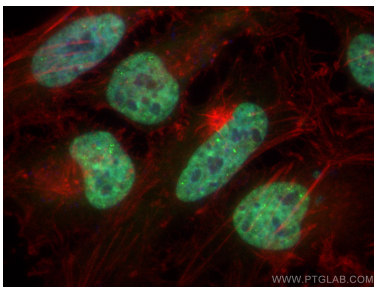
Store at -20°C. Avoid exposure to light. Stable for one year after shipment.

**Storage Buffer:**

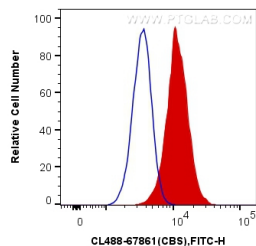
PBS with 50% Glycerol, 0.05% Proclin300, 0.5% BSA, pH 7.3.

Aliquoting is unnecessary for -20°C storage

## Selected Validation Data



Immunofluorescent analysis of (4% PFA) fixed HeLa cells using Coralite® Plus 488 CBS antibody (CL488-67861, Clone: 1E4F10) at dilution of 1:200, CL594-Phalloidin (red).



$1 \times 10^6$  HeLa cells were intracellularly stained with 0.4 ug Coralite® Plus 488 Anti-Human CBS (CL488-67861, Clone: 1E4F10) (red), or 0.4 ug Mouse IgG2b Isotype Control (CL488-66360-3, Clone: K11B8C4B5) (blue). Cells were fixed with 4% PFA and permeabilized with Flow Cytometry Perm Buffer (PF00011-C).