

CoraLite® Plus 488-conjugated BCLAF1 Monoclonal antibody

Catalog Number: **CL488-67860**

Basic Information

Catalog Number:

CL488-67860

Size:

1000 µg/ml

Source:

Mouse

Isotype:

IgG1

Immunogen Catalog Number:

AG25210

GenBank Accession Number:

BC132780

GeneID (NCBI):

9774

UNIPROT ID:

Q9NYF8

Full Name:

BCL2-associated transcription factor 1

Calculated MW:

920 aa, 106 kDa

Observed MW:

145 kDa

Purification Method:

Protein G purification

CloneNo.:

1D6G7

**Excitation/Emission maxima
wavelengths:**

493 nm / 522 nm

Applications

Tested Applications:

FC (Intra)

Species Specificity:

human, mouse, rat

Background Information

BCLF1, also named as Bcl-2-associated transcription factor 1, is a 920 amino acid protein, which interacts with Bcl-2 related proteins, EMD, with the adenovirus E1B 19 kDa protein and with DNA. BCLF1 as a death-promoting transcriptional repressor may be involved in cyclin-D1/CCND1 mRNA stability through the SNARP complex which associates with both the 3' end of the CCND1 gene and its mRNA. The calculated molecular weight of BCLF1 is a 110 kDa, but the modified BCLF1 protein is about 140-150 kDa.

Storage

Storage:

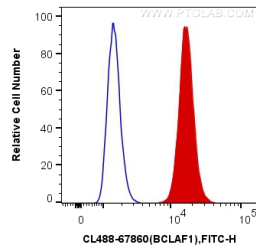
Store at -20°C. Avoid exposure to light.

Storage Buffer:

PBS with 50% Glycerol, 0.05% Proclin300, 0.5% BSA, pH 7.3.

Aliquoting is unnecessary for -20°C storage

Selected Validation Data



1X10⁶ HepG2 cells were intracellularly stained with 0.4 ug CoraLite® Plus 488 Anti-Human BCLAF1 (CL488-67860, Clone:1D6G7) (red), or 0.4 ug Mouse IgG1 Isotype Control (CL488-66360, Clone: T1F8D3F10) (blue). Cells were fixed and permeabilized with Transcription Factor Staining Buffer Kit (PF00011).