

For Research Use Only

CoraLite® Plus 488-conjugated ASH2L Monoclonal antibody

Catalog Number: **CL488-67859**

Basic Information

Catalog Number:

CL488-67859

Size:

1000 µg/ml

Source:

Mouse

Isotype:

IgG2a

Immunogen Catalog Number:

AG3008

GenBank Accession Number:

BC015936

GeneID (NCBI):

9070

UNIPROT ID:

Q9UBL3

Full Name:

ash2 (absent, small, or homeotic)-like
(Drosophila)

Calculated MW:

628 aa, 69 kDa

Observed MW:

80 kDa

Purification Method:

Protein A purification

CloneNo.:

1G1H3

Excitation/Emission maxima
wavelengths:

493 nm / 522 nm

Applications

Tested Applications:

FC (Intra)

Species Specificity:

Human, rat

Background Information

Storage

Storage:

Store at -20°C. Avoid exposure to light. Stable for one year after shipment.

Storage Buffer:

PBS with 50% Glycerol, 0.05% Proclin300, 0.5% BSA, pH 7.3.

Aliquoting is unnecessary for -20°C storage

For technical support and original validation data for this product please contact:

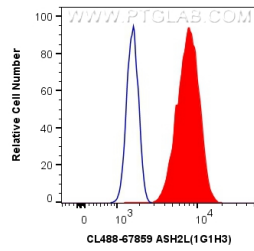
T: 4006900926

E: Proteintech-CN@ptglab.com

W: ptgcn.com

This product is exclusively available under Proteintech Group brand and is not available to purchase from any other manufacturer.

Selected Validation Data



1X10⁶ HeLa cells were intracellularly stained with 0.8 ug CoraLite® Plus 488 Anti-Human ASH2L (CL488-67859, Clone:1G1H3) (red), or 0.8 ug CoraLite® Plus 488 Mouse IgG2a Isotype Control (C1.18.4) (CL488-65208, Clone: C1.18.4) (blue). Cells were fixed and permeabilized with Transcription Factor Staining Buffer Kit (PF00011).