

CoraLite® Plus 488-conjugated VAMP2 Monoclonal antibody

Catalog Number: **CL488-67822**

Basic Information

| | | |
|---|--|---|
| Catalog Number: CL488-67822 | GenBank Accession Number: BC002737 | Purification Method: Protein A purification |
| Size: 1000 µg/ml | GeneID (NCBI): 6844 | CloneNo.: 1G7E8 |
| Source: Mouse | UNIPROT ID: P63027 | Recommended Dilutions: IF/ICC 1:50-1:500 |
| Isotype: IgG3 | Full Name: vesicle-associated membrane protein 2 (synaptobrevin 2) | Excitation/Emission maxima wavelengths: 493 nm / 522 nm |
| Immunogen Catalog Number: AG17908 | Calculated MW: 13 kDa | |
| | Observed MW: 19 kDa | |

Applications

| | |
|---|--|
| Tested Applications: IF/ICC | Positive Controls: IF/ICC : U-87 MG cells, |
| Species Specificity: Human, Mouse, Rat, Pig, Rabbit | |

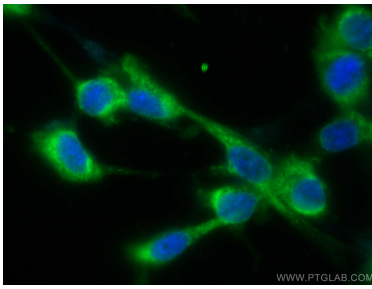
Background Information

VAMP2 (vesicle-associated membrane protein 2), also named as synaptobrevin 2, is a member of the SNARE (soluble NSF-attachment protein receptor) family proteins. Characterized by a common sequence called the SNARE motif, SNARE proteins are involved in membrane fusion and vesicular transport (PMID: 11252968). VAMP2, with a molecular mass of 15-19 kDa, consists of a short N-terminal sequence, a SNARE motif, and a C-terminal transmembrane region. It is required for fast calcium-triggered synaptic vesicle fusion. VAMP2 forms a stable complex with STX1 (syntaxin 1) and SNAP25 (synaptosomal-associated protein 25) during synaptic vesicle fusion (PMID: 16793874). It also forms a distinct complex with synaptophysin. VAMP2 is expressed in nervous system and some non-neuronal tissues, such as skeletal muscle (PMID: 18570252).

Storage

Storage:
Store at -20°C. Avoid exposure to light. Stable for one year after shipment.
Storage Buffer:
PBS with 50% Glycerol, 0.05% Proclin300, 0.5% BSA, pH 7.3.
 Aliquoting is unnecessary for -20°C storage

Selected Validation Data



Immunofluorescent analysis of (-20°C Ethanol) fixed U-87 MG cells using CoraLite® Plus 488 VAMP2 antibody (CL488-67822, Clone: 1G7E8) at dilution of 1:200.