

For Research Use Only

# CoraLite® Plus 488-conjugated LARP1 Monoclonal antibody



Catalog Number:CL488-67810

## Basic Information

Catalog Number:

CL488-67810

Size:

1000 µg/ml

Source:

Mouse

Isotype:

IgG1

Immunogen Catalog Number:

AG29993

GenBank Accession Number:

BC033856

GeneID (NCBI):

23367

UNIPROT ID:

Q6PKG0

Full Name:

La ribonucleoprotein domain family,  
member 1

Calculated MW:

1096 aa, 124 kDa

Observed MW:

140-150 kDa

Purification Method:

Protein G purification

CloneNo.:

2E9F2

Recommended Dilutions:

IF 1:50-1:500

Excitation/Emission maxima

wavelengths:

493 nm / 522 nm

## Applications

Tested Applications:

IF/ICC

Species Specificity:

Human, mouse, rat

Positive Controls:

IF : HepG2 cells,

## Background Information

### Storage

Storage:

Store at -20°C. Avoid exposure to light.

Storage Buffer:

PBS with 50% Glycerol, 0.05% Proclin300, 0.5% BSA, pH 7.3.

Aliquoting is unnecessary for -20°C storage

For technical support and original validation data for this product please contact:

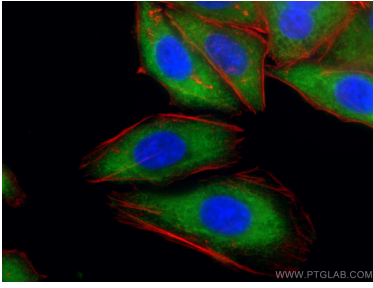
T: 4006900926

E: [Proteintech-CN@ptglab.com](mailto:Proteintech-CN@ptglab.com)

W: [ptgcn.com](http://ptgcn.com)

This product is exclusively available under Proteintech Group brand and is not available to purchase from any other manufacturer.

## Selected Validation Data



Immunofluorescent analysis of (-20°C Methanol) fixed HepG2 cells using CoraLite® Plus 488 LARP1 antibody (CL488-67810, Clone: 2E9F2) at dilution of 1:100, CoraLite® 594 Beta Actin antibody (CL594-66009, Clone: 2D4H5, red).