

CoraLite® Plus 488-conjugated PPP2CA Monoclonal antibody

Catalog Number: **CL488-67809**

Basic Information

Catalog Number:

CL488-67809

Size:

1000 µg/ml

Source:

Mouse

Isotype:

IgG1

Immunogen Catalog Number:

AG4294

GenBank Accession Number:

BC031696

GeneID (NCBI):

5515

UNIPROT ID:

P67775

Full Name:

protein phosphatase 2 (formerly 2A),
catalytic subunit, alpha isoform

Calculated MW:

309 aa, 36 kDa

Observed MW:

33 kDa

Purification Method:

Protein G purification

CloneNo.:

3A6H5

**Excitation/Emission maxima
wavelengths:**

493 nm / 522 nm

Applications

Tested Applications:

FC (Intra)

Species Specificity:

human, rat

Background Information

PPP2CA, also named as RP-C and PP2A-alpha, belongs to the PPP phosphatase family and PP-1 subfamily. PP2A can modulate the activity of phosphorylase B kinase casein kinase 2, mitogen-stimulated S6 kinase, and MAP-2 kinase. PP2A activity was modestly decreased in AML patients harboring C-KIT/WT. PP2A is a target for C-KIT/TKD and implicated the potential efficacy of therapies targeting PP2A in such AML in future.

Storage

Storage:

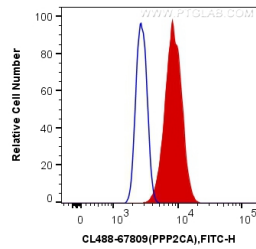
Store at -20°C. Avoid exposure to light. Stable for one year after shipment.

Storage Buffer:

PBS with 50% Glycerol, 0.05% Proclin300, 0.5% BSA, pH 7.3.

Aliquoting is unnecessary for -20°C storage

Selected Validation Data



1X10⁶ MCF-7 cells were intracellularly stained with 0.4 ug CoraLite® Plus 488 Anti-Human PPP2CA (CL488-67809, Clone:3A6H5) (red), or 0.4 ug Control Antibody. Cells were fixed and permeabilized with Transcription Factor Staining Buffer Kit (PF00011).