

For Research Use Only

CoraLite® Plus 488-conjugated SMCR7L Monoclonal antibody



Catalog Number: CL488-67808

Basic Information

Catalog Number:

CL488-67808

Size:

1000 µg/ml

Source:

Mouse

Isotype:

IgG2b

Immunogen Catalog Number:

AG13775

GenBank Accession Number:

BC002587

GeneID (NCBI):

54471

UNIPROT ID:

Q9NQG6

Full Name:

Smith-Magenis syndrome
chromosome region, candidate 7-like

Calculated MW:

463 aa, 51 kDa

Observed MW:

48-51 kDa

Purification Method:

Protein A purification

CloneNo.:

3B3G3

Recommended Dilutions:

IF 1:50-1:500

Excitation/Emission maxima
wavelengths:

493 nm / 522 nm

Applications

Tested Applications:

IF-P

Species Specificity:

Human, mouse, rat

Positive Controls:

IF: mouse testis tissue,

Background Information

Human SMCR7L gene encodes, MID51, the mitochondrial dynamic protein of 51 kDa (also called mitochondrial elongation factor 1, MIEF1). MID51 is a single-pass membrane protein anchored to the mitochondrial outer membrane and regulates mitochondrial morphology. Mitochondrial morphology is controlled by two opposing processes: fusion and fission. Elevated MID51 levels induce extensive mitochondrial fusion, whereas depletion of MID51 causes mitochondrial fragmentation. MID51 interacts with and recruits Drp1 to mitochondria, suggesting a critical role of MID51 in regulation of mitochondrial fusion-fission machinery in vertebrates.

Storage

Storage:

Store at -20°C. Avoid exposure to light.

Storage Buffer:

PBS with 50% Glycerol, 0.05% Proclin300, 0.5% BSA, pH 7.3.

Aliquoting is unnecessary for -20°C storage

For technical support and original validation data for this product please contact:

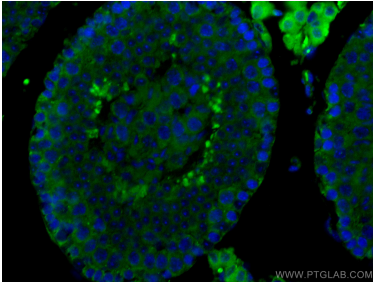
T: 4006900926

E: Proteintech-CN@ptglab.com

W: ptgcn.com

This product is exclusively available under Proteintech Group brand and is not available to purchase from any other manufacturer.

Selected Validation Data



Immunofluorescent analysis of (4% PFA) fixed mouse testis tissue using CoraLite® Plus 488 SMCR7L antibody (CL488-67808, Clone: 3B3G3) at dilution of 1:200.