

For Research Use Only

# CoraLite® Plus 488-conjugated WWP1 Monoclonal antibody

Catalog Number: CL488-67804

Featured Product



## Basic Information

Catalog Number:

CL488-67804

Source:

Mouse

Isotype:

IgG2b

Immunogen Catalog Number:

AG30171

GenBank Accession Number:

BC036065

GeneID (NCBI):

11059

UNIPROT ID:

Q9H0M0

Full Name:

WW domain containing E3 ubiquitin protein ligase 1

Calculated MW:

922 aa, 105 kDa

Observed MW:

95-105 kDa

Purification Method:

Protein A purification

CloneNo.:

2G8G11

Recommended Dilutions:

FC (Intra): 0.40 ug per 10<sup>6</sup> cells in a 100 µl suspension

Excitation/Emission maxima wavelengths:

493 nm / 522 nm

## Applications

Tested Applications:

FC (Intra)

Species Specificity:

human

Positive Controls:

FC (Intra) : PC-3 cells,

## Background Information

WW domain-containing E3 ubiquitin protein ligase 1 (WWP1) is a multifunction protein containing an N-terminal C2 domain, four tandem WW domains for substrate binding, and a C-terminal catalytic HECT domain for ubiquitin transferring. It is also named as AIP5, Tiul1. WWP1 regulates a variety of cellular biological processes including protein trafficking and degradation, signaling, transcription, and viral budding. WWP1 has been implicated in several diseases, such as cancers, infectious diseases, neurological diseases, and aging (PMID:22051607). It has 6 isoforms produced by alternative splicing.

## Storage

Storage:

Store at -20°C. Avoid exposure to light. Stable for one year after shipment.

Storage Buffer:

PBS with 50% glycerol, 0.05% Proclin300, 0.5% BSA, pH7.3

Aliquoting is unnecessary for -20°C storage

For technical support and original validation data for this product please contact:

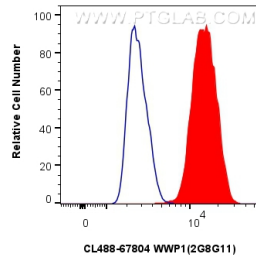
T: 4006900926

E: [Proteintech-CN@ptglab.com](mailto:Proteintech-CN@ptglab.com)

W: [ptgcn.com](http://ptgcn.com)

This product is exclusively available under Proteintech Group brand and is not available to purchase from any other manufacturer.

## Selected Validation Data



1x10<sup>6</sup> PC-3 cells were intracellularly stained with 0.4 ug Coralite® Plus 488 Wwp1 Monoclonal Antibody (CL488-67804, Clone:2G8G11)(red), or 0.4 ug Coralite® Plus 488 Mouse IgG2b isotype control (11B8C4) (CL488-66360-3, Clone: 11B8C4) (blue). Cells were fixed with 4% PFA and permeabilized with Flow Cytometry Perm Buffer.