

For Research Use Only

# CoraLite® Plus 488-conjugated AIF Monoclonal antibody



Catalog Number: **CL488-67791**

## Basic Information

Catalog Number:

CL488-67791

Size:

1000 µg/ml

Source:

Mouse

Isotype:

IgG2a

Immunogen Catalog Number:

AG12400

GenBank Accession Number:

BC111065

GeneID (NCBI):

9131

UNIPROT ID:

O95831

Full Name:

apoptosis-inducing factor,  
mitochondrion-associated, 1

Calculated MW:

609 aa, 66 kDa

Observed MW:

67 kDa, 57 kDa

Purification Method:

Protein A purification

CloneNo.:

8C12B2

Recommended Dilutions:

IF-P 1:50-1:500

Excitation/Emission maxima  
wavelengths:

493 nm / 522 nm

## Applications

Tested Applications:

IF-P

Species Specificity:

Human

Positive Controls:

IF-P: human kidney tissue,

## Background Information

Apoptosis-inducing factor (AIF) is one of the mitochondrial proteins to be released into the cytosol during apoptosis, and it is discovered as the first protein that regulates caspase-independent apoptosis (PMID:20494118). AIF is encoded as a 67 kDa protein that contains a mitochondrial localization signal (MLS) in the N-terminus. It is cleaved from the 62 kDa to the 57 kDa form following ischemic injury and translocated from the mitochondria to the nucleus in a calpain-dependent manner (PMID:19332058).

## Storage

Storage:

Store at -20°C. Avoid exposure to light.

Storage Buffer:

PBS with 50% Glycerol, 0.05% Proclin300, 0.5% BSA, pH 7.3.

Aliquoting is unnecessary for -20°C storage

For technical support and original validation data for this product please contact:

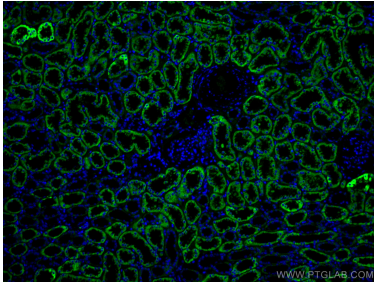
T: 4006900926

E: [Proteintech-CN@ptglab.com](mailto:Proteintech-CN@ptglab.com)

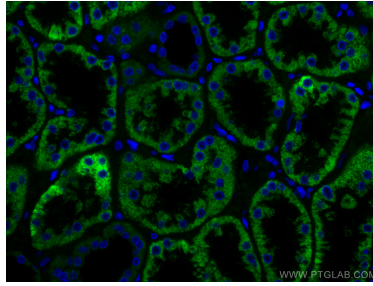
W: [ptgcn.com](http://ptgcn.com)

This product is exclusively available under Proteintech Group brand and is not available to purchase from any other manufacturer.

## Selected Validation Data



Immunofluorescent analysis of (4% PFA) fixed human kidney tissue using Coralite® Plus 488 AIF antibody (CL488-67791, Clone: 8C12B2 ) at dilution of 1:200.



Immunofluorescent analysis of (4% PFA) fixed human kidney tissue using Coralite® Plus 488 AIF antibody (CL488-67791, Clone: 8C12B2 ) at dilution of 1:200.