

For Research Use Only

# CoraLite® Plus 488-conjugated citrate synthase Monoclonal antibody



Catalog Number: **CL488-67784**

## Basic Information

<b>Catalog Number:</b> CL488-67784	<b>GenBank Accession Number:</b> BC010106	<b>Purification Method:</b> Protein G purification
<b>Size:</b> 1000 µg/ml	<b>GeneID (NCBI):</b> 1431	<b>CloneNo.:</b> 2F9G6
<b>Source:</b> Mouse	<b>UNIPROT ID:</b> O75390	<b>Recommended Dilutions:</b> IF 1:50-1:500
<b>Isotype:</b> IgG1	<b>Full Name:</b> citrate synthase	<b>Excitation/Emission maxima wavelengths:</b> 493 nm / 522 nm
<b>Immunogen Catalog Number:</b> AG9255	<b>Calculated MW:</b> 466 aa, 52 kDa	

## Applications

<b>Tested Applications:</b> IF/ICC	<b>Positive Controls:</b> IF : MCF-7 cells,
<b>Species Specificity:</b> Human, mouse, rat	

## Background Information

Citrate synthase (CS), the first and rate-limiting enzyme of the tricarboxylic acid cycle, plays a key role in regulating energy generation of mitochondrial respiration (PMID:19479947). It belongs to the citrate synthase family. The deduced 466-amino acid protein contains an N-terminal mitochondrial targeting sequence and a motif highly conserved in citrate synthases (PMID:12549038). It can exist as a dimer (PMID:8749851). Northern blot analysis detected no CS expression in thymus and small intestine (PMID:12549038). This antibody is specific to CS.

## Storage

**Storage:**  
Store at -20°C. Avoid exposure to light.  
**Storage Buffer:**  
PBS with 50% Glycerol, 0.05% Proclin300, 0.5% BSA, pH 7.3.  
Aliquoting is unnecessary for -20°C storage

For technical support and original validation data for this product please contact:

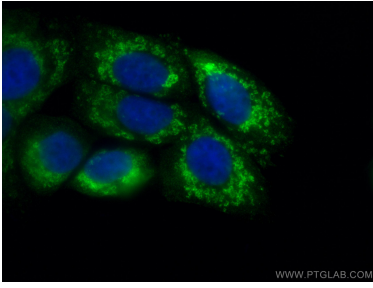
T: 4006900926

E: [Proteintech-CN@ptglab.com](mailto:Proteintech-CN@ptglab.com)

W: [ptgcn.com](http://ptgcn.com)

**This product is exclusively available under Proteintech Group brand and is not available to purchase from any other manufacturer.**

## Selected Validation Data



Immunofluorescent analysis of (4% PFA) fixed MCF-7 cells using CoraLite® Plus 488 citrate synthase antibody (CL488-67784, Clone: 2F9G6) at dilution of 1:200. DAPI (blue).