

For Research Use Only

CoraLite® Plus 488-conjugated IgG lambda chain Monoclonal antibody



Catalog Number: **CL488-67762**

Basic Information

Catalog Number:

CL488-67762

Size:

1000 µg/ml

Source:

Mouse

Isotype:

IgG2a

Immunogen Catalog Number:

AG14783

GenBank Accession Number:

BC007782

GeneID (NCBI):

3537

Full Name:

immunoglobulin lambda constant 1
(Mcg marker)

Calculated MW:

233 aa, 25 kDa

Observed MW:

~25 kDa

Purification Method:

Protein A purification

CloneNo.:

1D12B5

Recommended Dilutions:

IF-P 1:50-1:500

Excitation/Emission maxima
wavelengths:

493 nm / 522 nm

Applications

Tested Applications:

IF-P

Species Specificity:

Human

Positive Controls:

IF-P: human tonsillitis tissue,

Background Information

This antibody detects Lambda chain of human IgG.

Storage

Storage:

Store at -20°C. Avoid exposure to light.

Storage Buffer:

PBS with 50% Glycerol, 0.05% Proclin300, 0.5% BSA, pH 7.3.

Aliquoting is unnecessary for -20°C storage

For technical support and original validation data for this product please contact:

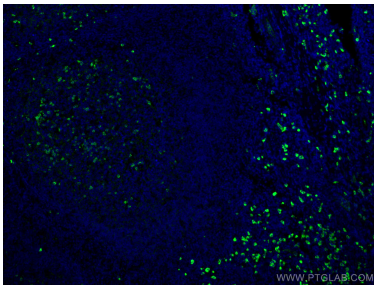
T: 4006900926

E: Proteintech-CN@ptglab.com

W: ptgcn.com

This product is exclusively available under Proteintech Group brand and is not available to purchase from any other manufacturer.

Selected Validation Data



Immunofluorescent analysis of (4% PFA) fixed human tonsillitis tissue using Coralite® Plus 488 Human IgG lambda chain antibody (CL488-67762, Clone: 1D12B5) at dilution of 1:200.