

For Research Use Only

CoraLite® Plus 488-conjugated IgG Heavy chain Monoclonal antibody



Catalog Number:CL488-67760

Basic Information

Catalog Number:

CL488-67760

Size:

1000 µg/ml

Source:

Mouse

Isotype:

IgG2a

GenBank Accession Number:

GeneID (NCBI):

Full Name:

Calculated MW:

155 kDa

Observed MW:

~50 kDa

Purification Method:

Protein A purification

CloneNo.:

1C6B4

Recommended Dilutions:

IF 1:50-1:500

Excitation/Emission maxima
wavelengths:

493 nm / 522 nm

Applications

Tested Applications:

IF-P

Species Specificity:

Human

Positive Controls:

IF : human tonsillitis tissue,

Background Information

This antibody detects the heavy chain of human IgG.

Storage

Storage:

Store at -20°C. Avoid exposure to light.

Storage Buffer:

PBS with 50% Glycerol, 0.05% Proclin300, 0.5% BSA, pH 7.3.

Aliquoting is unnecessary for -20°C storage

For technical support and original validation data for this product please contact:

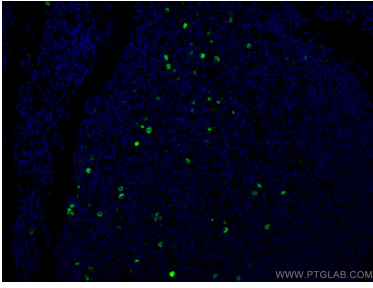
T: 4006900926

E: Proteintech-CN@ptglab.com

W: ptgcn.com

This product is exclusively available under Proteintech Group brand and is not available to purchase from any other manufacturer.

Selected Validation Data



Immunofluorescent analysis of (4% PFA) fixed human tonsillitis tissue using CoraLite® Plus 488 Human IgG Heavy chain antibody (CL488-67760, Clone: 1C6B4) at dilution of 1:200.