

For Research Use Only

CoraLite® Plus 488-conjugated RUVBL1 Monoclonal antibody

Catalog Number: CL488-67750



Basic Information

Catalog Number:

CL488-67750

Source:

Mouse

Isotype:

IgG1

Immunogen Catalog Number:

AG16688

GenBank Accession Number:

BC002993

GeneID (NCBI):

8607

UNIPROT ID:

Q9Y265

Full Name:

RuvB-like 1 (E. coli)

Calculated MW:

456 aa, 50 kDa

Observed MW:

50 kDa

Purification Method:

Protein G purification

CloneNo.:

1F2D9

Recommended Dilutions:

IF/ICC: 1:50-1:500

FC (Intra): 0.40 ug per 10⁶ cells in a 100 µl suspension

Excitation/Emission maxima wavelengths:

493 nm / 522 nm

Applications

Tested Applications:

IF/ICC, FC (Intra)

Species Specificity:

human, rat

Positive Controls:

IF/ICC : LNCaP cells,

FC (Intra) : HEK-293 cells,

Background Information

RUVBL1 is a member of the AAA (ATPase associated with diverse cellular activities) family of proteins that is associated with several chromatin-remodelling complexes and has important roles in transcriptional regulation, the DNA damage response, telomerase activity, snoRNP assembly, cellular transformation and cancer metastasis [PMID: 21617703]. It consists of 456 amino acids (50 kDa) and interacts with TATA-binding protein (TBP), which is a central component for transcriptional regulation by forming complexes with various transcription regulators. RUVBL1 is a component of a large nuclear protein complex, possibly the RNA polymerase II holoenzyme. RUVBL1 is also highly homologous to RuvB proteins that function as a DNA helicase promote branch migration of the Holliday junction [PMID: 9588198].

Storage

Storage:

Store at -20°C. Avoid exposure to light. Stable for one year after shipment.

Storage Buffer:

PBS with 50% glycerol, 0.05% Proclin300, 0.5% BSA, pH7.3

Aliquoting is unnecessary for -20°C storage

For technical support and original validation data for this product please contact:

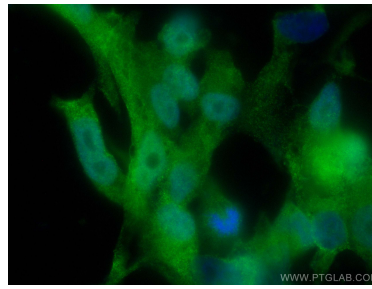
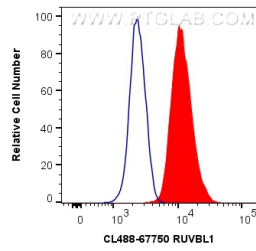
T: 4006900926

E: Proteintech-CN@ptglab.com

W: ptgcn.com

This product is exclusively available under Proteintech Group brand and is not available to purchase from any other manufacturer.

Selected Validation Data



1X10⁶ HEK-293 cells were intracellularly stained with 0.4 μ g CoraLite® Plus 488 Anti-Human RUVBL1 (CL488-67750, Clone:1F2D9) (red), or 0.4 μ g Control Antibody. Cells were fixed with 4% PFA and permeabilized with Flow Cytometry Perm Buffer.

Immunofluorescent analysis of (4% PFA) fixed LNCaP cells using CoraLite® Plus 488 RUVBL1 antibody (CL488-67750, Clone: 1F2D9) at dilution of 1:200.