

CoraLite[®] Plus 488-conjugated GOT2 Monoclonal antibody

Catalog Number: **CL488-67738**

Basic Information

Catalog Number:

CL488-67738

Size:

1000 µg/ml

Source:

Mouse

Isotype:

IgG1

Immunogen Catalog Number:

AG6600

GenBank Accession Number:

BC000525

GeneID (NCBI):

2806

UNIPROT ID:

P00505

Full Name:

glutamic-oxaloacetic transaminase 2,
mitochondrial (aspartate
aminotransferase 2)

Calculated MW:

47 kDa

Observed MW:

39-40 kDa

Purification Method:

Protein G purification

CloneNo.:

1B6C6

Excitation/Emission maxima
wavelengths:

493 nm / 522 nm

Applications

Tested Applications:

FC (Intra)

Species Specificity:

human, mouse, rat, pig, chicken

Background Information

GOT2 encodes the mitochondrial glutamate oxaloacetate transaminase and plays an essential role in the intracellular NAD(H) redox balance. Upregulation of GOT2 has been reported in various cancers, including breast cancer and pancreatic cancer. GOT2 mutation leads to autosomal recessive neurometabolic disorder.

Storage

Storage:

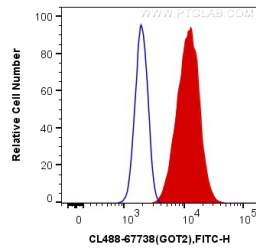
Store at -20°C. Avoid exposure to light. Stable for one year after shipment.

Storage Buffer:

PBS with 50% Glycerol, 0.05% Proclin300, 0.5% BSA, pH 7.3.

Aliquoting is unnecessary for -20°C storage

Selected Validation Data



1X10⁶ HeLa cells were intracellularly stained with 0.4 ug Coralite® Plus 488 Anti-Human GOT2 (CL488-67738, Clone:1B6C6) (red), or 0.4 ug Control Antibody. Cells were fixed with 4% PFA and permeabilized with Flow Cytometry Perm Buffer (PF00011-C).