

CoraLite® Plus 488-conjugated PSMA6 Monoclonal antibody

Catalog Number: **CL488-67695**

Basic Information

Catalog Number:

CL488-67695

Size:

1000 µg/ml

Source:

Mouse

Isotype:

IgG2b

Immunogen Catalog Number:

AG21761

GenBank Accession Number:

BC023659

GeneID (NCBI):

5687

UNIPROT ID:

P60900

Full Name:

proteasome (prosome, macropain)
subunit, alpha type, 6

Calculated MW:

246 aa, 27 kDa

Observed MW:

30 kDa

Purification Method:

Protein A purification

CloneNo.:

1D4B2

Recommended Dilutions:

IF-P 1:50-1:500

IF/ICC 1:50-1:500

**Excitation/Emission maxima
wavelengths:**

493 nm / 522 nm

Applications

Tested Applications:

IF/ICC, IF-P

Species Specificity:

human, mouse, rat

Positive Controls:

IF-P : human lung cancer tissue,

IF/ICC : U2OS cells,

Background Information

PSMA6 (Proteasome subunit alpha type-6) is also named as PROS27 and belongs to the peptidase T1A family. The proteasome is a multicatalytic proteinase complex which is characterized by its ability to cleave peptides with Arg, Phe, Tyr, Leu, and Glu adjacent to the leaving group at neutral or slightly basic pH. It also has an ATP-dependent proteolytic activity.

Storage

Storage:

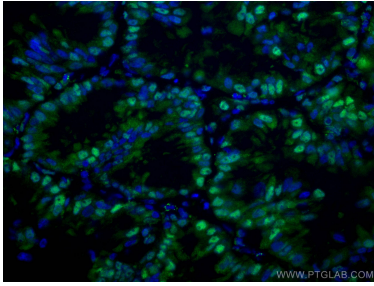
Store at -20°C. Avoid exposure to light.

Storage Buffer:

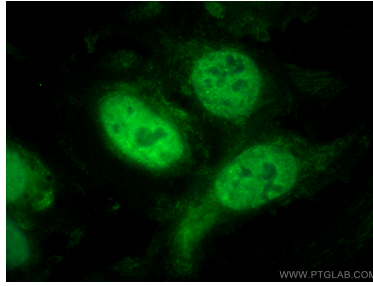
PBS with 50% Glycerol, 0.05% Proclin300, 0.5% BSA, pH 7.3.

Aliquoting is unnecessary for -20°C storage

Selected Validation Data



Immunofluorescent analysis of (4% PFA) fixed human lung cancer tissue using CoraLite® Plus 488 PSMA6 antibody (CL488-67695, Clone: 1D4B2) at dilution of 1:200.



Immunofluorescent analysis of (4% PFA) fixed U2OS cells using CoraLite® Plus 488 PSMA6 antibody (CL488-67695, Clone: 1D4B2) at dilution of 1:200.