

CoraLite® Plus 488-conjugated ASL Monoclonal antibody

Catalog Number: **CL488-67692**

Basic Information

Catalog Number:

CL488-67692

Size:

1000 µg/ml

Source:

Mouse

Isotype:

IgG2b

Immunogen Catalog Number:

AG30517

GenBank Accession Number:

BC008195

GeneID (NCBI):

435

UNIPROT ID:

P04424

Full Name:

argininosuccinate lyase

Calculated MW:

55 kDa

Observed MW:

50 kDa

Purification Method:

Protein A purification

CloneNo.:

1G9H3

Excitation/Emission maxima wavelengths:

493 nm / 522 nm

Applications

Tested Applications:

FC (Intra)

Species Specificity:

Human, mouse, rat, pig

Background Information

Argininosuccinate lyase (ASL), one of the significant UC enzymes, catalyzes argininosuccinate cleavage to generate arginine and fumarate. Arginine is then catalyzed by arginase to ornithine and polyamines, which are found to promote cancer cell proliferation and growth. Importantly, ASL ectopic expression is closely associated with poor prognosis of colorectal cancer, hepatocellular. ASL is a member of the aspartase/fumarase superfamily. Enzymes of this superfamily share similar tetrameric structure and active site, though the sequence identities between different members are quite low (less than 20%). Members of this superfamily have been recognised as drug targets for microbial infections. ASL is a 464-amino-acid enzyme with a molecular mass of 49.7 kDa. (PMID: 22386318 PMID: 31018905)

Storage

Storage:

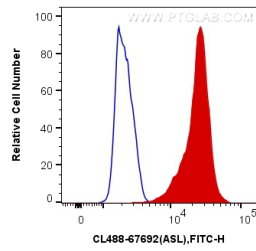
Store at -20°C. Avoid exposure to light. Stable for one year after shipment.

Storage Buffer:

PBS with 50% Glycerol, 0.05% Proclin300, 0.5% BSA, pH 7.3.

Aliquoting is unnecessary for -20°C storage

Selected Validation Data



1X10⁶ K-562 cells were intracellularly stained with 0.4 ug CoraLite® Plus 488 Anti-Human ASL (CL488-67692, Clone:1G9H3) (red), or 0.4 ug Mouse IgG2b Isotype Control (CL488-66360-3, Clone: K11B8C4B5) (blue). Cells were fixed with 4% PFA and permeabilized with Flow Cytometry Perm Buffer (PF00011-C).