

For Research Use Only

# CoraLite® Plus 488-conjugated NXT1 Monoclonal antibody



Catalog Number: CL488-67680

## Basic Information

<b>Catalog Number:</b> CL488-67680	<b>GenBank Accession Number:</b> BC000759	<b>Purification Method:</b> Protein A purification
<b>Size:</b> 1000 µg/ml	<b>GeneID (NCBI):</b> 29107	<b>CloneNo.:</b> 2C10A2
<b>Source:</b> Mouse	<b>UNIPROT ID:</b> Q9UJK6	<b>Excitation/Emission maxima wavelengths:</b> 493 nm / 522 nm
<b>Isotype:</b> IgG2a	<b>Full Name:</b> NTF2-like export factor 1	
<b>Immunogen Catalog Number:</b> AG30039	<b>Calculated MW:</b> 15 kDa	
	<b>Observed MW:</b> 15 kDa	

## Applications

**Tested Applications:**  
FC (Intra)

**Species Specificity:**  
Human, mouse, rat

## Background Information

NXT1 is located in the nuclear envelope and is homologous to nuclear transport factor 2. NXT1 functions as a nuclear export factor in both RAN (Ras-related nuclear protein)- and CRM1 (required for chromosome region maintenance)-dependent pathways. It is found to stimulate the export of U1 snRNA in RAN- and CRM1-dependent pathways and the export of tRNA and mRNA in a CRM1-independent pathway. NXT1 also heterodimerizes with Tap protein and regulates the ability of Tap protein to mediate nuclear mRNA export.

## Storage

**Storage:**  
Store at -20°C. Avoid exposure to light. Stable for one year after shipment.

**Storage Buffer:**  
PBS with 50% Glycerol, 0.05% Proclin300, 0.5% BSA, pH 7.3.

**Aliquoting is unnecessary for -20°C storage**

For technical support and original validation data for this product please contact:

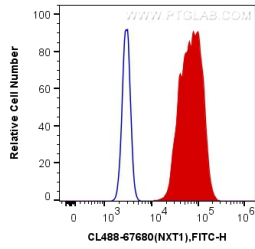
T: 4006900926

E: [Proteintech-CN@ptglab.com](mailto:Proteintech-CN@ptglab.com)

W: [ptgcn.com](http://ptgcn.com)

**This product is exclusively available under Proteintech Group brand and is not available to purchase from any other manufacturer.**

## Selected Validation Data



1X10<sup>6</sup> HeLa cells were intracellularly stained with 0.4 ug Coralite® Plus 488 Anti-Human NXT1 (CL488-67680, Clone:2C10A2) (red), or 0.4 ug Mouse IgG2a Isotype Control (CL488-66360-2, Clone: K11A1B2A2) (blue). Cells were fixed with 4% PFA and permeabilized with Flow Cytometry Perm Buffer (PF00011-C).