

For Research Use Only

# CoraLite® Plus 488-conjugated LRPPRC Monoclonal antibody



Catalog Number:CL488-67679

## Basic Information

<b>Catalog Number:</b> CL488-67679	<b>GenBank Accession Number:</b> BC050311	<b>Purification Method:</b> Protein A purification
<b>Size:</b> 1000 µg/ml	<b>GeneID (NCBI):</b> 10128	<b>CloneNo.:</b> 3H7E1
<b>Source:</b> Mouse	<b>UNIPROT ID:</b> P42704	<b>Recommended Dilutions:</b> IF 1:50-1:500
<b>Isotype:</b> IgG2b	<b>Full Name:</b> leucine-rich PPR-motif containing	<b>Excitation/Emission maxima wavelengths:</b> 493 nm / 522 nm
<b>Immunogen Catalog Number:</b> AG30261	<b>Calculated MW:</b> 1394 aa, 158 kDa	
	<b>Observed MW:</b> 130 kDa	

## Applications

<b>Tested Applications:</b> IF/ICC	<b>Positive Controls:</b> IF : HeLa cells,
<b>Species Specificity:</b> Human	

## Background Information

LRPPRC (also called LRP130 or GP130) is a 130-kDa RNA-binding protein of the pentatricopeptide repeat family. LRPPRC localizes primarily to the mitochondria where it binds to poly(A) mRNA. It plays a role in translation or stability of mitochondrially encoded cytochrome c oxidase (COX) subunits. LRPPRC has also been shown to regulate nuclear gene transcription and to bind specific RNA molecules in both the nucleus and the cytoplasm. Mutations in LRPPRC gene are associated with the French-Canadian type of Leigh syndrome.

## Storage

**Storage:**  
Store at -20°C. Avoid exposure to light.  
**Storage Buffer:**  
PBS with 50% Glycerol, 0.05% Proclin300, 0.5% BSA, pH 7.3.  
Aliquoting is unnecessary for -20°C storage

For technical support and original validation data for this product please contact:

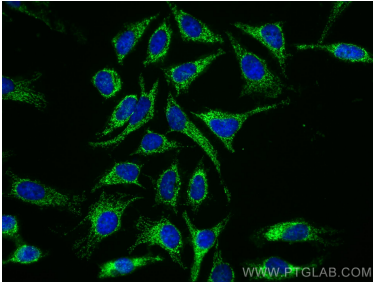
T: 4006900926

E: [Proteintech-CN@ptglab.com](mailto:Proteintech-CN@ptglab.com)

W: [ptgcn.com](http://ptgcn.com)

**This product is exclusively available under Proteintech Group brand and is not available to purchase from any other manufacturer.**

## Selected Validation Data



Immunofluorescent analysis of (4% PFA) fixed HeLa cells using CoraLite® Plus 488 LRPPRC antibody (CL488-67679, Clone: 3H7E1) at dilution of 1:200.