

For Research Use Only

CoraLite® Plus 488-conjugated DVL1 Monoclonal antibody

Catalog Number: CL488-67672



Basic Information

Catalog Number:

CL488-67672

Size:

1000 ug/ml

Source:

Mouse

Isotype:

IgG1

Immunogen Catalog Number:

AG26083

GenBank Accession Number:

BC050454

GeneID (NCBI):

1855

UNIPROT ID:

O14640

Full Name:

dishevelled, dsh homolog 1 (Drosophila)

Calculated MW:

75 kDa

Observed MW:

70-75 kDa

Purification Method:

Protein G purification

CloneNo.:

1A2A5

Recommended Dilutions:

IF/ICC 1:50-1:500

Excitation/Emission maxima wavelengths:

493 nm / 522 nm

Applications

Tested Applications:

IF/ICC, FC (Intra)

Species Specificity:

human, mouse, rat

Positive Controls:

IF/ICC : MCF-7 cells,

Background Information

DVL1 is one of three DVL homologous proteins (DVL1-3) widely expressed in embryonic development and in the adult central nervous system. Dishevelled proteins are a necessary component of the Wnt and planar cell polarity developmental signaling pathways. Overexpression of DVL1 has been linked to prostate and breast cancers through the Wnt signaling pathway. There are two isoforms of DVL1: 75 kDa and 73 kDa.

Storage

Storage:

Store at -20°C. Avoid exposure to light. Stable for one year after shipment.

Storage Buffer:

PBS with 50% Glycerol, 0.05% Proclin300, 0.5% BSA, pH 7.3.

Aliquoting is unnecessary for -20°C storage

For technical support and original validation data for this product please contact:

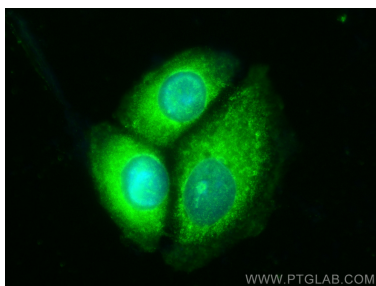
T: 4006900926

E: Proteintech-CN@ptglab.com

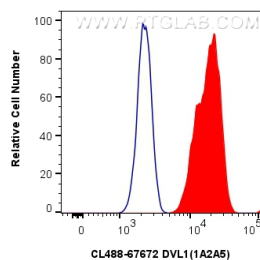
W: ptgcn.com

This product is exclusively available under Proteintech Group brand and is not available to purchase from any other manufacturer.

Selected Validation Data



Immunofluorescent analysis of (-20°C Methanol) fixed MCF-7 cells using CoraLite® Plus 488 DVL1 antibody (CL488-67672, Clone: 1A2A5) at dilution of 1:200.



1x10⁶ U2OS cells were intracellularly stained with 0.4 ug CoraLite® Plus 488-conjugated DVL1 Monoclonal antibody (CL488-67672, Clone:1A2A5) (red), or 0.4 ug CoraLite® Plus 488 Mouse IgG1 Isotype Control (1F8D3) (CL488-66360-1, Clone: 1F8D3) (blue). Cells were fixed and permeabilized with Transcription Factor Staining Buffer Kit (PF00011).