

# CoraLite® Plus 488-conjugated MTHFD1 Monoclonal antibody

Catalog Number: **CL488-67670**

## Basic Information

**Catalog Number:**

CL488-67670

**Size:**

1000 µg/ml

**Source:**

Mouse

**Isotype:**

IgG1

**Immunogen Catalog Number:**

AG24553

**GenBank Accession Number:**

BC009806

**GeneID (NCBI):**

4522

**UNIPROT ID:**

P11586

**Full Name:**

methylenetetrahydrofolate  
dehydrogenase (NADP+ dependent) 1,493 nm / 522 nm  
methenyltetrahydrofolate  
cyclohydrolase,  
formyltetrahydrofolate synthetase

**Calculated MW:**

101 kDa

**Observed MW:**

101 kDa

**Purification Method:**

Protein G purification

**CloneNo.:**

2B1G3

**Recommended Dilutions:**

IF/ICC 1:50-1:500

**Excitation/Emission maxima  
wavelengths:**

## Applications

**Tested Applications:**

IF/ICC, FC (Intra)

**Species Specificity:**

human, mouse, rat

**Positive Controls:**

IF/ICC : HEK-293 cells,

## Background Information

MTHFD1 is a trifunctional enzyme involved in the pathway tetrahydrofolate interconversion, which is part of One-carbon metabolism. MTHFD1 is associated with HCC and CRC progression. It has been reported that MTHFD-deficient patient fibroblasts exhibit enriched MTHFD1 in the nucleus which is critical for de novo dTMP synthesis. (PMID: 31133746, 30997850, 31421459, 25548164)

## Storage

**Storage:**

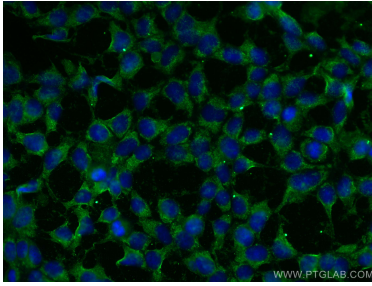
Store at -20°C. Avoid exposure to light. Stable for one year after shipment.

**Storage Buffer:**

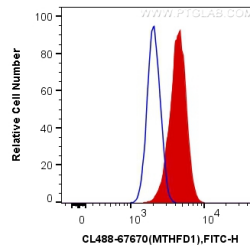
PBS with 50% Glycerol, 0.05% Proclin300, 0.5% BSA, pH 7.3.

Aliquoting is unnecessary for -20°C storage

## Selected Validation Data



Immunofluorescent analysis of (-20°C Ethanol) fixed HEK-293 cells using CoraLite® Plus 488 MTHFD1 antibody (CL488-67670, Clone: 2B1G3 ) at dilution of 1:200.



1X10<sup>6</sup> HEK-293 cells were intracellularly stained with 0.4 ug CoraLite® Plus 488 Anti-Human MTHFD1 (CL488-67670, Clone:2B1G3) (red), or 0.4 ug Control Antibody. Cells were fixed with 4% PFA and permeabilized with Flow Cytometry Perm Buffer (PF00011-C).