

For Research Use Only

# CoraLite® Plus 488-conjugated EPCR/CD201 Monoclonal antibody

Catalog Number:CL488-67658



## Basic Information

Catalog Number:

CL488-67658

Size:

1000 ug/ml

Source:

Mouse

Isotype:

IgG1

Immunogen Catalog Number:

AG25628

GenBank Accession Number:

BC014451

GeneID (NCBI):

10544

UNIPROT ID:

Q9UNN8

Full Name:

protein C receptor, endothelial (EPCR)

Calculated MW:

238 aa, 27 kDa

Observed MW:

49 kDa

Purification Method:

Protein G purification

CloneNo.:

1F5C4

Recommended Dilutions:

IF/ICC 1:50-1:500

Excitation/Emission maxima

wavelengths:

493 nm / 522 nm

## Applications

Tested Applications:

IF/ICC

Species Specificity:

human, pig

Positive Controls:

IF/ICC : HeLa cells,

## Background Information

### Storage

Storage:

Store at -20°C. Avoid exposure to light. Stable for one year after shipment.

Storage Buffer:

PBS with 50% Glycerol, 0.05% Proclin300, 0.5% BSA, pH 7.3.

Aliquoting is unnecessary for -20°C storage

For technical support and original validation data for this product please contact:

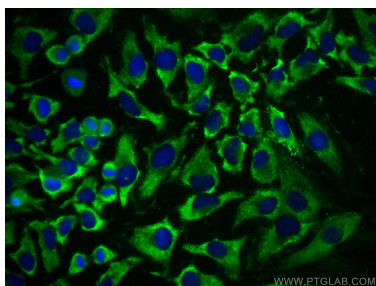
T: 4006900926

E: [Proteintech-CN@ptglab.com](mailto:Proteintech-CN@ptglab.com)

W: [ptgcn.com](http://ptgcn.com)

This product is exclusively available under Proteintech Group brand and is not available to purchase from any other manufacturer.

## Selected Validation Data



Immunofluorescent analysis of (-20°C Ethanol) fixed HeLa cells using CoraLite® Plus 488 PROCR antibody (CL488-67658, Clone: 1F5C4 ) at dilution of 1:200.