

For Research Use Only

CoraLite® Plus 488-conjugated GRIA1 Monoclonal antibody



Catalog Number: **CL488-67642**

Basic Information

Catalog Number:

CL488-67642

Size:

1000 µg/ml

Source:

Mouse

Isotype:

IgG2b

Immunogen Catalog Number:

AG28932

GenBank Accession Number:

BC111734

GeneID (NCBI):

2890

UNIPROT ID:

P42261

Full Name:

glutamate receptor, ionotropic, AMPA

1

Calculated MW:

906 aa, 102 kDa

Observed MW:

100 kDa

Purification Method:

Protein A purification

CloneNo.:

1F4A1

Recommended Dilutions:

IF-P 1:50-1:500

Excitation/Emission maxima

wavelengths:

493 nm / 522 nm

Applications

Tested Applications:

IF-P

Species Specificity:

Human, Pig, Mouse, Rat, Rabbit

Positive Controls:

IF-P: mouse brain tissue,

Background Information

Storage

Storage:

Store at -20°C. Avoid exposure to light.

Storage Buffer:

PBS with 50% Glycerol, 0.05% Proclin300, 0.5% BSA, pH 7.3.

Aliquoting is unnecessary for -20°C storage

For technical support and original validation data for this product please contact:

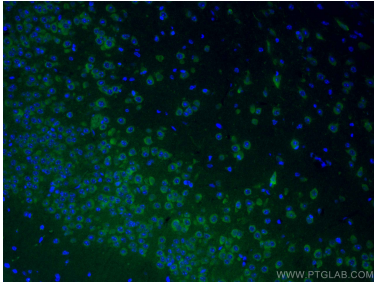
T: 4006900926

E: Proteintech-CN@ptglab.com

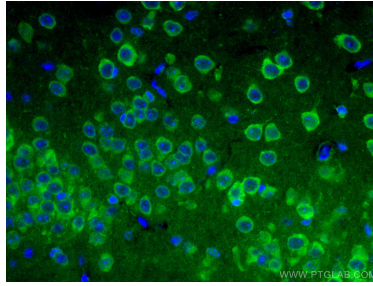
W: ptgcn.com

This product is exclusively available under Proteintech Group brand and is not available to purchase from any other manufacturer.

Selected Validation Data



Immunofluorescent analysis of (4% PFA) fixed mouse brain tissue using CoraLite® Plus 488 GRIA1 antibody (CL488-67642, Clone: 1F4A1) at dilution of 1:100.



Immunofluorescent analysis of (4% PFA) fixed mouse brain tissue using CoraLite® Plus 488 GRIA1 antibody (CL488-67642, Clone: 1F4A1) at dilution of 1:100.