

For Research Use Only



CoraLite® Plus 488-conjugated ANO2 Monoclonal antibody

Catalog Number: **CL488-67638**

Basic Information

Catalog Number:

CL488-67638

Size:

1000 µg/ml

Source:

Mouse

Isotype:

IgG2a

GenBank Accession Number:

NM_020373

GeneID (NCBI):

57101

UNIPROT ID:

Q9NQ90

Full Name:

anoctamin 2

Calculated MW:

114 kDa

Purification Method:

Protein A purification

CloneNo.:

2F12G1

Recommended Dilutions:

IF-P 1:50-1:500

Excitation/Emission maxima wavelengths:

493 nm / 522 nm

Applications

Tested Applications:

IF-P

Species Specificity:

Human, mouse

Positive Controls:

IF-P : mouse eye tissue,

Background Information

ANO2, also named as C12orf3 and TMEM16B, belongs to the anoctamin family. It acts as a calcium-activated chloride channel (CaCC), mostly in photoreceptors. It may mediate olfactory amplification in olfactory sensory neurons (OSNs) and light perception amplification in retina.

Storage

Storage:

Store at -20°C. Avoid exposure to light.

Storage Buffer:

PBS with 50% Glycerol, 0.05% Proclin300, 0.5% BSA, pH 7.3.

Aliquoting is unnecessary for -20°C storage

For technical support and original validation data for this product please contact:

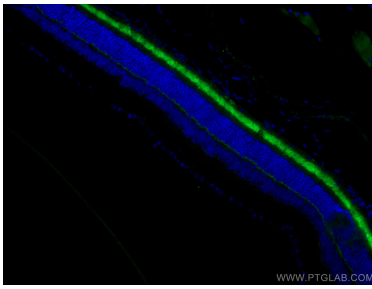
T: 4006900926

E: Proteintech-CN@ptglab.com

W: ptgcn.com

This product is exclusively available under Proteintech Group brand and is not available to purchase from any other manufacturer.

Selected Validation Data



Immunofluorescent analysis of (4% PFA) fixed mouse eye tissue using CoraLite® Plus 488 ANO2 antibody (CL488-67638, Clone: 2F12G1) at dilution of 1:200.