

For Research Use Only

CoraLite® Plus 488-conjugated EXOSC9 Monoclonal antibody

Catalog Number: CL488-67636

Featured Product



Basic Information

Catalog Number:

CL488-67636

Size:

1000 ug/ml

Source:

Mouse

Isotype:

IgG2a

Immunogen Catalog Number:

AG19783

GenBank Accession Number:

BC142978

GeneID (NCBI):

5393

UNIPROT ID:

Q06265

Full Name:

exosome component 9

Calculated MW:

456 aa, 51 kDa

Observed MW:

65-70 kDa

Purification Method:

Protein A purification

CloneNo.:

3F4G1

Recommended Dilutions:

IF/ICC 1:50-1:500

Excitation/Emission maxima
wavelengths:

493 nm / 522 nm

Applications

Tested Applications:

IF/ICC, FC (Intra)

Species Specificity:

human, mouse, rat

Positive Controls:

IF/ICC : HeLa cells,

Background Information

EXOSC9, also named as PMSC1 and PM/Scl-75, is a key subunit of the exosome complex. EXOSC9 maintains self-renewal in a cell-autonomous manner. EXOSC9 has 4 isoforms with MW 49 kDa, 51 kDa, 39 kDa and 41 kDa. It's polymyositis/scleroderma auto-antigen 75 kDa. The MW of EXOSC9 is migrated to 60-75 kDa for modification in WB detection.

Storage

Storage:

Store at -20°C. Avoid exposure to light. Stable for one year after shipment.

Storage Buffer:

PBS with 50% Glycerol, 0.05% Proclin300, 0.5% BSA, pH 7.3.

Aliquoting is unnecessary for -20°C storage

For technical support and original validation data for this product please contact:

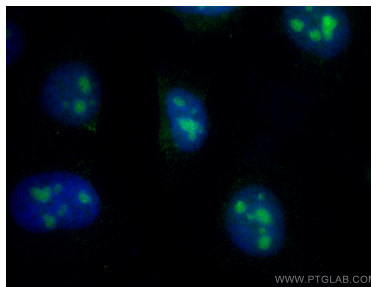
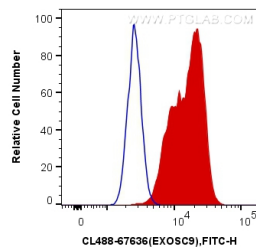
T: 4006900926

E: Proteintech-CN@ptglab.com

W: ptgcn.com

This product is exclusively available under Proteintech Group brand and is not available to purchase from any other manufacturer.

Selected Validation Data



1X10⁶ HeLa cells were intracellularly stained with 0.4 ug CoraLite® Plus 488 Anti-Human EXOSC9 (CL488-67636, Clone:3F4G1) (red), or 0.4 ug Mouse IgG2a Isotype Control (CL488-66360-2, Clone: K11A1B2A2) (blue). Cells were fixed and permeabilized with Transcription Factor Staining Buffer Kit (PF00011).

Immunofluorescent analysis of (4% PFA) fixed HeLa cells using CoraLite® Plus 488 EXOSC9 antibody (CL488-67636, Clone: 3F4G1) at dilution of 1:200.