

For Research Use Only

CoraLite® Plus 488-conjugated Ch-TOG Monoclonal antibody



Catalog Number: **CL488-67631**

1 Publications

Basic Information

Catalog Number:

CL488-67631

Size:

1000 µg/ml

Source:

Mouse

Isotype:

IgG1

Immunogen Catalog Number:

AG28770

GenBank Accession Number:

BC120869

GeneID (NCBI):

9793

UNIPROT ID:

Q14008

Full Name:

cytoskeleton associated protein 5

Observed MW:

220-240 kDa

Purification Method:

Protein G purification

CloneNo.:

1H5G1

Recommended Dilutions:

IF/ICC 1:50-1:500

Excitation/Emission maxima wavelengths:

493 nm / 522 nm

Applications

Tested Applications:

IF/ICC

Cited Applications:

IF

Species Specificity:

Human, mouse, rat, pig

Positive Controls:

IF/ICC : HepG2 cells,

Background Information

Ch-TOG (colonic hepatic tumor-overexpressed gene), also known as XMAP215 or CKAP5, is a microtubule polymerase which can promotes cytoplasmic microtubule nucleation and elongation. Through interacting with Aurora-A and TACC3, it plays a major role in organizing spindle poles.

Notable Publications

| Author | Pubmed ID | Journal | Application |
|-----------|-----------|---------|-------------|
| Tianyu Wu | 36395215 | Science | IF |

Storage

Storage:

Store at -20°C. Avoid exposure to light.

Storage Buffer:

PBS with 50% Glycerol, 0.05% Proclin300, 0.5% BSA, pH 7.3.

Aliquoting is unnecessary for -20°C storage

For technical support and original validation data for this product please contact:

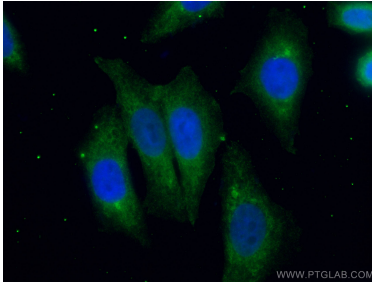
T: 4006900926

E: Proteintech-CN@ptglab.com

W: ptgcn.com

This product is exclusively available under Proteintech Group brand and is not available to purchase from any other manufacturer.

Selected Validation Data



Immunofluorescent analysis of (4% PFA) fixed HepG2 cells using Coralite® Plus 488-conjugated Ch-TOG antibody (CL488-67631, Clone: 1H5G1) at dilution of 1:100.