

For Research Use Only

# CoraLite® Plus 488-conjugated PHGDH Monoclonal antibody



Catalog Number: CL488-67591

## Basic Information

|  |   |   |
|--|---|---|
| <b>Catalog Number:</b><br>CL488-67591      | <b>GenBank Accession Number:</b><br>BC000303        | <b>Purification Method:</b><br>Protein G purification                 |
| <b>Size:</b><br>1000 µg/ml                 | <b>GeneID (NCBI):</b><br>26227                      | <b>CloneNo.:</b><br>1E8B8   |
| <b>Source:</b><br>Mouse                    | <b>UNIPROT ID:</b><br>O43175                        | <b>Recommended Dilutions:</b><br>IF 1:50-1:500                        |
| <b>Isotype:</b><br>IgG1                    | <b>Full Name:</b><br>phosphoglycerate dehydrogenase | <b>Excitation/Emission maxima<br/>wavelengths:</b><br>493 nm / 522 nm |
| <b>Immunogen Catalog Number:</b><br>AG6877 | <b>Calculated MW:</b><br>57 kDa                     |   |
|  | <b>Observed MW:</b><br>57 kDa                       |   |

## Applications

|  |   |
|--|---|
| <b>Tested Applications:</b><br>IF/ICC            | <b>Positive Controls:</b><br>IF : HeLa cells, |
| <b>Species Specificity:</b><br>Human, Mouse, Rat |   |

## Background Information

PHGDH(D-3-phosphoglycerate dehydrogenase) is also named as 3-PGDH, PGDH3 and belongs to the D-isomer specific 2-hydroxyacid dehydrogenase family. It catalyzes the transition of 3-phosphoglycerate into 3-phosphohydroxypyruvate, which is the first and rate-limiting step in the phosphorylated pathway of serine biosynthesis, using NAD<sup>+</sup>/NADH as a cofactor. 3-PGDH deficiency is a rare recessive inborn error in the biosynthesis of the amino acid L-serine characterized clinically by congenital microcephaly, psychomotor retardation, and intractable seizures(PMID:19235232).

## Storage

**Storage:**  
Store at -20°C. Avoid exposure to light.  
**Storage Buffer:**  
PBS with 50% Glycerol, 0.05% Proclin300, 0.5% BSA, pH 7.3.  
Aliquoting is unnecessary for -20°C storage

For technical support and original validation data for this product please contact:

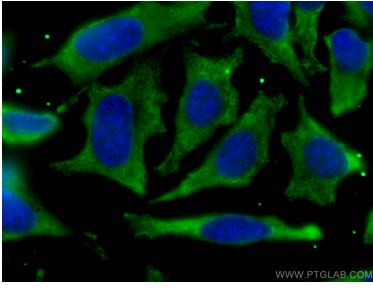
T: 4006900926

E: [Proteintech-CN@ptglab.com](mailto:Proteintech-CN@ptglab.com)

W: [ptgcn.com](http://ptgcn.com)

This product is exclusively available under Proteintech Group brand and is not available to purchase from any other manufacturer.

## Selected Validation Data



Immunofluorescent analysis of (-20°C Ethanol) fixed HeLa cells using CoraLite® Plus 488-conjugated PHGDH antibody (CL488-67591, Clone: 1E8B8) at dilution of 1:100.