

For Research Use Only



# CoraLite® Plus 488-conjugated Tim23 Monoclonal antibody

Catalog Number: **CL488-67535**

## Basic Information

<b>Catalog Number:</b> CL488-67535	<b>GenBank Accession Number:</b> BC062707	<b>Purification Method:</b> Protein G purification
<b>Size:</b> 1000 µg/ml	<b>GeneID (NCBI):</b> 10431	<b>CloneNo.:</b> 3H10F5
<b>Source:</b> Mouse	<b>UNIPROT ID:</b> O14925	<b>Recommended Dilutions:</b> IF/ICC 1:50-1:500
<b>Isotype:</b> IgG1	<b>Full Name:</b> translocase of inner mitochondrial membrane 23 homolog (yeast)	<b>Excitation/Emission maxima wavelengths:</b> 493 nm / 522 nm
<b>Immunogen Catalog Number:</b> AG27069	<b>Calculated MW:</b> 22 kDa	
	<b>Observed MW:</b> 21 kDa	

## Applications

<b>Tested Applications:</b> IF/ICC	<b>Positive Controls:</b> IF/ICC : HepG2 cells,
<b>Species Specificity:</b> Human, Mouse, Rat	

## Background Information

Tim23 is a mitochondrial inner membrane protein essential for import of preproteins into the matrix. Tim23 together with Tim17 and Tim44 form the Tim23 complex which mediates the import of nuclear encoded preproteins into the mitochondria. Tim23 is commonly used as loading control for mitochondrial inner membrane protein.

## Storage

**Storage:**  
Store at -20°C. Avoid exposure to light.  
**Storage Buffer:**  
PBS with 50% Glycerol, 0.05% Proclin300, 0.5% BSA, pH 7.3.  
**Aliquoting is unnecessary for -20°C storage**

For technical support and original validation data for this product please contact:

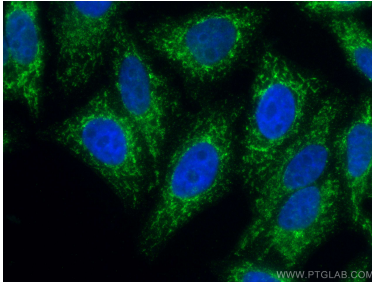
T: 4006900926

E: [Proteintech-CN@ptglab.com](mailto:Proteintech-CN@ptglab.com)

W: [ptgcn.com](http://ptgcn.com)

**This product is exclusively available under Proteintech Group brand and is not available to purchase from any other manufacturer.**

## Selected Validation Data



Immunofluorescent analysis of (4% PFA) fixed HepG2 cells using CoraLite® Plus 488 Tim23 antibody (CL488-67535, Clone: 3H10F5 ) at dilution of 1:200.