

For Research Use Only

# CoraLite® Plus 488-conjugated RALYL Monoclonal antibody



Catalog Number: CL488-67534

## Basic Information

<b>Catalog Number:</b> CL488-67534	<b>GenBank Accession Number:</b> BC031090	<b>Purification Method:</b> Protein G purification
<b>Size:</b> 1000 µg/ml	<b>GeneID (NCBI):</b> 138046	<b>CloneNo.:</b> 1F3F4
<b>Source:</b> Mouse	<b>UNIPROT ID:</b> Q865E5	<b>Recommended Dilutions:</b> IF 1:50-1:500
<b>Isotype:</b> IgG1	<b>Full Name:</b> RALY RNA binding protein-like	<b>Excitation/Emission maxima wavelengths:</b> 493 nm / 522 nm
<b>Immunogen Catalog Number:</b> AG11676	<b>Calculated MW:</b> 291 aa, 32 kDa	
	<b>Observed MW:</b> 35-40 kDa	

## Applications

<b>Tested Applications:</b> FC (Intra), IF/ICC	<b>Positive Controls:</b> IF : HepG2 cells,
<b>Species Specificity:</b> Human, mouse, rat, pig	

## Background Information

RALY RNA binding protein-like (RALYL) belongs to the RALY subfamily. RALYL locates in 8q21.2, the function of which is RNA-binding and nucleotide binding. The RALYL high expression in the normal adrenal, kidney and brain (Shyamsundar et al., 2005). Furthermore, RALYL expression down-regulated correlates with mental disorder (Lee et al., 2007), Parkinson's disease (Moran et al., 2006), brain cancer (Maris et al., 2008), adrenal cancer (Giordano et al., 2009) and kidney cancer (Higgins et al., 2003). The expression of RALYL was significantly low in Clear Cell Renal Cell Carcinoma and correlated with a poor prognosis in a large number of clinical samples. Our findings showed that RALYL may be a potential therapeutic target as well as a poor prognostic

## Storage

**Storage:**  
Store at -20°C. Avoid exposure to light. Stable for one year after shipment.  
**Storage Buffer:**  
PBS with 50% Glycerol, 0.05% Proclin300, 0.5% BSA, pH 7.3.  
Aliquoting is unnecessary for -20°C storage

For technical support and original validation data for this product please contact:

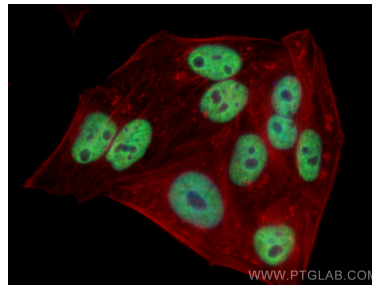
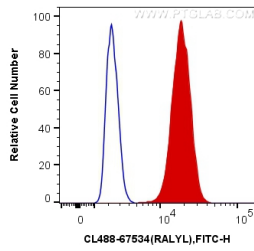
T: 4006900926

E: [Proteintech-CN@ptglab.com](mailto:Proteintech-CN@ptglab.com)

W: [ptgcn.com](http://ptgcn.com)

**This product is exclusively available under Proteintech Group brand and is not available to purchase from any other manufacturer.**

## Selected Validation Data



1X10<sup>6</sup> HepG2 cells were intracellularly stained with 0.4 ug CoraLite® Plus 488 Anti-Human RALYL (CL488-67534, Clone:1F3F4) (red), or 0.4 ug Control Antibody. Cells were fixed and permeabilized with Transcription Factor Staining Buffer Kit (PF00011).

Immunofluorescent analysis of (4% PFA) fixed HepG2 cells using CoraLite® Plus 488 RALYL antibody (CL488-67534, Clone: 1F3F4) at dilution of 1:200, CL594-Phalloidin (red).