

CoraLite[®] Plus 488-conjugated GPT/ALT1 Monoclonal antibody

Catalog Number: **CL488-67531**

Basic Information

Catalog Number: CL488-67531	GenBank Accession Number: BC018207	Purification Method: Protein G purification
Size: 1000 µg/ml	GeneID (NCBI): 2875	CloneNo.: 5F6B5
Source: Mouse	UNIPROT ID: P24298	Recommended Dilutions: IF/ICC 1:50-1:500
Isotype: IgG1	Full Name: glutamic-pyruvate transaminase (alanine aminotransferase)	Excitation/Emission maxima wavelengths: 493 nm / 522 nm
Immunogen Catalog Number: AG10453	Calculated MW: 496 aa, 55 kDa	
	Observed MW: 52 kDa	

Applications

Tested Applications: IF/ICC	Positive Controls: IF/ICC : HepG2 cells,
Species Specificity: Human, Pig	

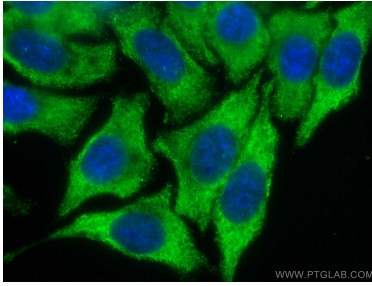
Background Information

GPT, also known as ALT1 (glutamate-pyruvate transaminase 1), catalyzes the reversible transamination between alanine and 2-oxoglutarate to generate pyruvate and glutamate and, therefore, plays a key role in the intermediary metabolism of glucose and amino acids. Serum activity levels of this enzyme are routinely used as a biomarker of liver injury caused by drug toxicity, infection, alcohol, and steatosis. A related gene on chromosome 16 encodes a putative mitochondrial alanine aminotransaminase.

Storage

Storage:
Store at -20°C. Avoid exposure to light. Stable for one year after shipment.
Storage Buffer:
PBS with 50% Glycerol, 0.05% Proclin300, 0.5% BSA, pH 7.3.
Aliquoting is unnecessary for -20°C storage

Selected Validation Data



Immunofluorescent analysis of (-20°C Methanol)
fixed HepG2 cells using CoraLite® Plus 488
GPT/ALT1 antibody (CL488-67531, Clone: 5F6B5)
at dilution of 1:200.