

For Research Use Only

CoraLite® Plus 488-conjugated SLC2A9 Monoclonal antibody



Catalog Number:CL488-67530

Basic Information

Catalog Number:

CL488-67530

Size:

1000 µg/ml

Source:

Mouse

Isotype:

IgG1

Immunogen Catalog Number:

AG24135

GenBank Accession Number:

BC018897

GeneID (NCBI):

56606

UNIPROT ID:

Q9NRM0

Full Name:

solute carrier family 2 (facilitated
glucose transporter), member 9

Calculated MW:

540 aa, 59 kDa

Observed MW:

56-59 kDa

Purification Method:

Protein G purification

CloneNo.:

2D6E1

Recommended Dilutions:

IF 1:50-1:500

Excitation/Emission maxima
wavelengths:

493 nm / 522 nm

Applications

Tested Applications:

IF-P

Species Specificity:

human, rat, pig

Positive Controls:

IF : human kidney tissue,

Background Information

Storage

Storage:

Store at -20°C. Avoid exposure to light.

Storage Buffer:

PBS with 50% Glycerol, 0.05% Proclin300, 0.5% BSA, pH 7.3.

Aliquoting is unnecessary for -20°C storage

For technical support and original validation data for this product please contact:

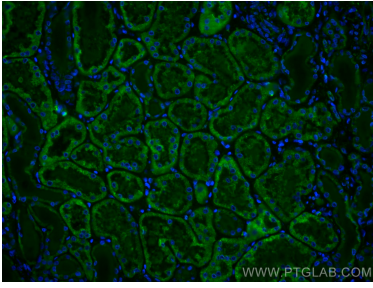
T: 4006900926

E: Proteintech-CN@ptglab.com

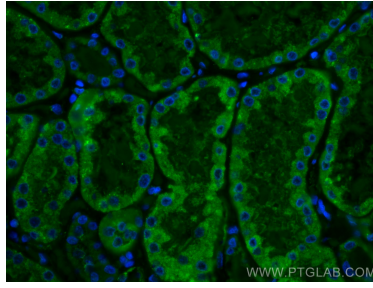
W: ptgcn.com

This product is exclusively available under Proteintech Group brand and is not available to purchase from any other manufacturer.

Selected Validation Data



Immunofluorescent analysis of (4% PFA) fixed human kidney tissue using CoraLite® Plus 488 SLC2A9 antibody (CL488-67530, Clone: 2D6E1) at dilution of 1:200.



Immunofluorescent analysis of (4% PFA) fixed human kidney tissue using CoraLite® Plus 488 SLC2A9 antibody (CL488-67530, Clone: 2D6E1) at dilution of 1:200.