

For Research Use Only

CoraLite® Plus 488-conjugated CMPK1 Monoclonal antibody



Catalog Number:CL488-67519

Basic Information

Catalog Number: CL488-67519	GenBank Accession Number: BC014961	Purification Method: Protein A purification
Size: 1000 µg/ml	GeneID (NCBI): 51727	CloneNo.: 2D11G7
Source: Mouse	UNIPROT ID: P30085	Recommended Dilutions: IF 1:50-1:500
Isotype: IgG2b	Full Name: cytidine monophosphate (UMP-CMP) kinase 1, cytosolic	Excitation/Emission maxima wavelengths: 493 nm / 522 nm
Immunogen Catalog Number: AG30084	Calculated MW: 228 aa, 26 kDa	
	Observed MW: 22-26 kDa	

Applications

Tested Applications: IF/ICC	Positive Controls: IF : HeLa cells,
Species Specificity: Human	

Background Information

Pyrimidine nucleoside monophosphate kinase [UMP/CMP kinase (UMP/CMPK)] (CMPK1) is also named as CMK, CMPK, UCK, UMK, UMPK and belongs to the adenylate kinase family. It plays a crucial role in the formation of UDP, CDP, and dCDP, which are required for cellular nucleic acid synthesis (PMID:11912132). CMPK1 can use a broad spectrum of phosphate donors but the best phosphate donors are ATP and dATP. CMPK1 has been reported as a prognostic marker for non-small cell lung cancer, pancreatic cancer and breast cancer (PMID: 21642870, 22838950, 27558661). The longest deduced protein contains 228 amino acids and has a calculated molecular mass of 26 kDa. However, translation likely begins at the second initiation methionine, resulting in a protein of 196 amino acids (PMID:10462544). The shorter form is the endogenously translated protein (PMID:11912132). CMPK1 has 3 isoforms with the molecular mass of 22, 16 and 26 kDa.

Storage

Storage:
Store at -20°C. Avoid exposure to light. Stable for one year after shipment.
Storage Buffer:
PBS with 50% Glycerol, 0.05% Proclin300, 0.5% BSA, pH 7.3.
Aliquoting is unnecessary for -20°C storage

For technical support and original validation data for this product please contact:

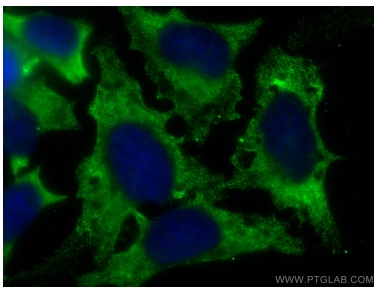
T: 4006900926

E: Proteintech-CN@ptglab.com

W: ptgcn.com

This product is exclusively available under Proteintech Group brand and is not available to purchase from any other manufacturer.

Selected Validation Data



Immunofluorescent analysis of (-20°C Methanol) fixed HeLa cells using CoraLite® Plus 488 CMPK1 antibody (CL488-67519, Clone: 2D11G7) at dilution of 1:200.