

For Research Use Only

# CoraLite® Plus 488-conjugated RBM15B Monoclonal antibody



Catalog Number: CL488-67506

## Basic Information

<b>Catalog Number:</b> CL488-67506	<b>GenBank Accession Number:</b> BC001367	<b>Purification Method:</b> Protein G purification
<b>Size:</b> 1000 µg/ml	<b>GeneID (NCBI):</b> 29890	<b>CloneNo.:</b> 1C2C11
<b>Source:</b> Mouse	<b>UNIPROT ID:</b> Q8NDT2	<b>Excitation/Emission maxima wavelengths:</b> 493 nm / 522 nm
<b>Isotype:</b> IgG1	<b>Full Name:</b> RNA binding motif protein 15B	
<b>Immunogen Catalog Number:</b> AG17853	<b>Calculated MW:</b> 890 aa, 97 kDa	
	<b>Observed MW:</b> 105 kDa	

## Applications

**Tested Applications:**  
FC (Intra)

**Species Specificity:**  
Human

## Background Information

RBM15B, one members of the SPEN (Split-end) family of proteins, have repressor function in several signaling pathways and may bind to RNA through interaction with spliceosome components. Present polyclonal anti-RBM15B antibody was produced by immunizing animals with C-terminus of RBM15B, which homolog with a short form of RBM15B(563aa, ~70kDa).

## Storage

**Storage:**  
Store at -20°C. Avoid exposure to light. Stable for one year after shipment.

**Storage Buffer:**  
PBS with 50% Glycerol, 0.05% Proclin300, 0.5% BSA, pH 7.3.

Aliquoting is unnecessary for -20°C storage

For technical support and original validation data for this product please contact:

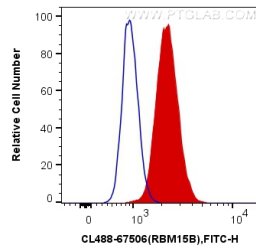
T: 4006900926

E: [Proteintech-CN@ptglab.com](mailto:Proteintech-CN@ptglab.com)

W: [ptgcn.com](http://ptgcn.com)

**This product is exclusively available under Proteintech Group brand and is not available to purchase from any other manufacturer.**

## Selected Validation Data



1X10<sup>6</sup> HepG2 cells were intracellularly stained with 0.4 ug CoraLite® Plus 488 Anti-Human RBM15B (CL488-67506, Clone:1C2C11) (red), or 0.4 ug x. Cells were fixed and permeabilized with Transcription Factor Staining Buffer Kit (PF00011).