

# CoraLite® Plus 488-conjugated SF3B3 Monoclonal antibody

Catalog Number: **CL488-67469**

## Basic Information

Catalog Number: <b>CL488-67469</b>	GenBank Accession Number: <b>BC003146</b>	Purification Method: <b>Protein A purification</b>
Size: <b>1000 µg/ml</b>	GeneID (NCBI): <b>23450</b>	CloneNo.: <b>2H7F5</b>
Source: <b>Mouse</b>	UNIPROT ID: <b>Q15393</b>	Recommended Dilutions: <b>IF/ICC 1:50-1:500</b>
Isotype: <b>IgG2b</b>	Full Name: <b>splicing factor 3b, subunit 3, 130kDa</b>	Excitation/Emission maxima wavelengths: <b>493 nm / 522 nm</b>
Immunogen Catalog Number: <b>AG6315</b>	Calculated MW: <b>136 kDa</b>	
	Observed MW: <b>130-135 kDa</b>	

## Applications

Tested Applications: <b>IF/ICC</b>	Positive Controls: <b>IF/ICC : HepG2 cells, HeLa cells</b>
Species Specificity: <b>Human, mouse, rat</b>	

## Background Information

Introns are removed from nuclear pre-mRNA in 2-step transesterification reactions. Splicing occurred in a large ribonucleoprotein particle, called the spliceosome. Spliceosomal intermediate complexes form on pre-mRNA in the order E, A, B, and C, with the catalytic reactions occurring in complex C. U2 small nuclear ribonucleoproteins are one of the proteins essential for spliceosome assembly and mRNA splicing. Functional U2 snRNP is composed of a 12S unit and 2 splicing factors, SF3A, which is composed of 3 proteins, and SF3B, which composed of 4 proteins. SF3B3 is one of SF3B, and it's required for 'A' complex assembly formed by the stable binding of U2 snRNP to the branchpoint sequence(BPS) in pre-mRNA.

## Storage

**Storage:**  
Store at -20°C. Avoid exposure to light. Stable for one year after shipment.  
**Storage Buffer:**  
PBS with 50% Glycerol, 0.05% Proclin300, 0.5% BSA, pH 7.3.  
**Aliquoting is unnecessary for -20°C storage**

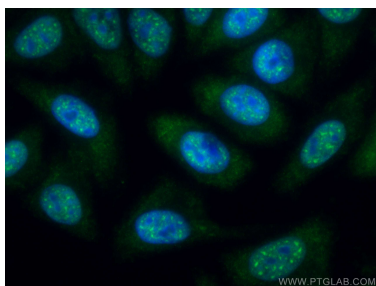
For technical support and original validation data for this product please contact:

T: 4006900926

E: [Proteintech-CN@ptglab.com](mailto:Proteintech-CN@ptglab.com)W: [ptgcn.com](http://ptgcn.com)

**This product is exclusively available under Proteintech Group brand and is not available to purchase from any other manufacturer.**

## Selected Validation Data



Immunofluorescent analysis of (-20°C Methanol) fixed HepG2 cells using CoraLite® Plus 488 SF3B3 antibody (CL488-67469, Clone: 2H7F5 ) at dilution of 1:200.



Immunofluorescent analysis of (4% PFA) fixed HeLa cells using CoraLite® Plus 488 SF3B3 antibody (CL488-67469, Clone: 2H7F5 ) at dilution of 1:200.