

For Research Use Only



CoraLite® Plus 488-conjugated Arfaptin-1 Monoclonal antibody

Catalog Number: **CL488-67461**

Basic Information

Catalog Number:

CL488-67461

Size:

1000 µg/ml

Source:

Mouse

Isotype:

IgG2a

Immunogen Catalog Number:

AG12097

GenBank Accession Number:

BC103759

GeneID (NCBI):

27236

UNIPROT ID:

P53367

Full Name:

ADP-ribosylation factor interacting protein 1

Calculated MW:

373 aa, 42 kDa

Purification Method:

Protein A purification

CloneNo.:

2A10B3

Recommended Dilutions:

IF-P 1:50-1:500

Excitation/Emission maxima wavelengths:

493 nm / 522 nm

Applications

Tested Applications:

IF-P

Species Specificity:

Human, mouse

Positive Controls:

IF-P: mouse kidney tissue,

Background Information

Storage

Storage:

Store at -20°C. Avoid exposure to light.

Storage Buffer:

PBS with 50% Glycerol, 0.05% Proclin300, 0.5% BSA, pH 7.3.

Aliquoting is unnecessary for -20°C storage

For technical support and original validation data for this product please contact:

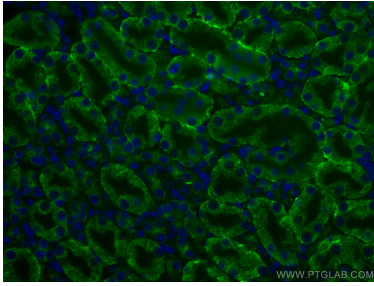
T: 4006900926

E: Proteintech-CN@ptglab.com

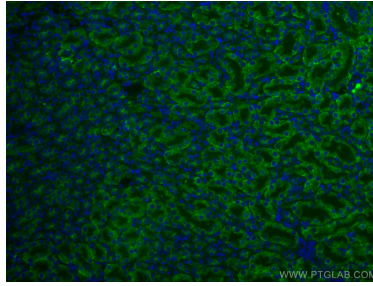
W: ptgcn.com

This product is exclusively available under Proteintech Group brand and is not available to purchase from any other manufacturer.

Selected Validation Data



Immunofluorescent analysis of (4% PFA) fixed mouse kidney tissue using Coralite® Plus 488 Arfaptin-1 antibody (CL488-67461, Clone: 2A10B3) at dilution of 1:200.



Immunofluorescent analysis of (4% PFA) fixed mouse kidney tissue using Coralite® Plus 488 Arfaptin-1 antibody (CL488-67461, Clone: 2A10B3) at dilution of 1:200.