

For Research Use Only

# CoraLite® Plus 488-conjugated BDH1 Monoclonal antibody



Catalog Number: CL488-67448

## Basic Information

Catalog Number:

CL488-67448

Size:

1000 µg/ml

Source:

Mouse

Isotype:

IgG1

Immunogen Catalog Number:

AG7864

GenBank Accession Number:

BC005844

GeneID (NCBI):

622

UNIPROT ID:

Q02338

Full Name:

3-hydroxybutyrate dehydrogenase,  
type 1

Calculated MW:

38 kDa

Observed MW:

31 kDa

Purification Method:

Protein G purification

CloneNo.:

2C3D4

Recommended Dilutions:

IF 1:50-1:500

Excitation/Emission maxima  
wavelengths:

493 nm / 522 nm

## Applications

Tested Applications:

IF-P

Species Specificity:

Human, Mouse, Rat, Pig

Positive Controls:

IF : mouse liver tissue,

## Background Information

BDH1 (3-hydroxybutyrate dehydrogenase, type 1) is a 343 amino acid protein that localizes to the mitochondrial matrix and belongs to the short-chain dehydrogenases/reductases (SDR) family. The deduced 343 amino acid protein contains a 46 residue leader peptide, which is cleaved to produce the mature form. It is a lipid-requiring mitochondrial enzyme with a specific requirement of phosphatidylcholine (PC).

## Storage

Storage:

Store at -20°C. Avoid exposure to light.

Storage Buffer:

PBS with 50% Glycerol, 0.05% Proclin300, 0.5% BSA, pH 7.3.

Aliquoting is unnecessary for -20°C storage

For technical support and original validation data for this product please contact:

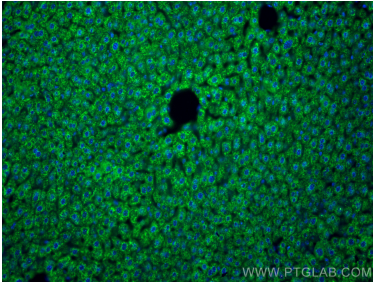
T: 4006900926

E: [Proteintech-CN@ptglab.com](mailto:Proteintech-CN@ptglab.com)

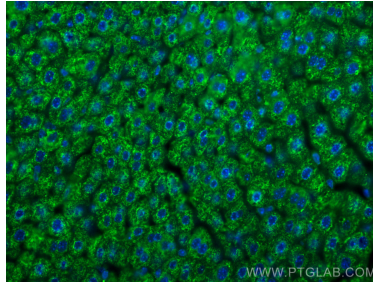
W: [ptgcn.com](http://ptgcn.com)

**This product is exclusively available under Proteintech Group brand and is not available to purchase from any other manufacturer.**

## Selected Validation Data



Immunofluorescent analysis of (4% PFA) fixed mouse liver tissue using CoraLite® Plus 488 BDH1 antibody (CL488-67448, Clone: 2C3D4) at dilution of 1:200.



Immunofluorescent analysis of (4% PFA) fixed mouse liver tissue using CoraLite® Plus 488 BDH1 antibody (CL488-67448, Clone: 2C3D4) at dilution of 1:200.