

For Research Use Only

CoraLite® Plus 488-conjugated MESDC2 Monoclonal antibody



Catalog Number: **CL488-67441**

Basic Information

Catalog Number:

CL488-67441

Size:

1000 µg/ml

Source:

Mouse

Isotype:

IgG2a

Immunogen Catalog Number:

AG1403

GenBank Accession Number:

BC009210

GeneID (NCBI):

23184

UNIPROT ID:

Q14696

Full Name:

mesoderm development candidate 2

Calculated MW:

26 kDa

Purification Method:

Protein A purification

CloneNo.:

1A2E7

Recommended Dilutions:

IF/ICC 1:50-1:500

Excitation/Emission maxima

wavelengths:

493 nm / 522 nm

Applications

Tested Applications:

IF/ICC

Species Specificity:

Human

Positive Controls:

IF/ICC : HEK-293 cells,

Background Information

Storage

Storage:

Store at -20°C. Avoid exposure to light.

Storage Buffer:

PBS with 50% Glycerol, 0.05% Proclin300, 0.5% BSA, pH 7.3.

Aliquoting is unnecessary for -20°C storage

For technical support and original validation data for this product please contact:

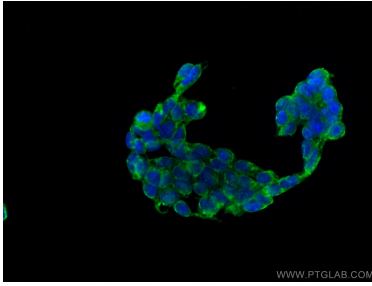
T: 4006900926

E: Proteintech-CN@ptglab.com

W: ptgcn.com

This product is exclusively available under Proteintech Group brand and is not available to purchase from any other manufacturer.

Selected Validation Data



Immunofluorescent analysis of (-20°C Ethanol) fixed HEK-293 cells using CoraLite® Plus 488 MESDC2 antibody (CL488-67441, Clone: 1A2E7) at dilution of 1:100.