

For Research Use Only

# CoraLite® Plus 488-conjugated CYP20A1 Monoclonal antibody



Catalog Number: **CL488-67433**

## Basic Information

Catalog Number:

CL488-67433

Size:

1000 µg/ml

Source:

Mouse

Isotype:

IgG1

Immunogen Catalog Number:

AG9715

GenBank Accession Number:

BC020616

GeneID (NCBI):

57404

UNIPROT ID:

Q6UW02

Full Name:

cytochrome P450, family 20,  
subfamily A, polypeptide 1

Calculated MW:

462 aa, 52 kDa

Observed MW:

49-52 kDa

Purification Method:

Protein G purification

CloneNo.:

2A9E2

Recommended Dilutions:

IF 1:200-1:800

Excitation/Emission maxima  
wavelengths:

493 nm / 522 nm

## Applications

Tested Applications:

IF/ICC

Species Specificity:

Human, Mouse, Rat

Positive Controls:

IF : HeLa cells,

## Background Information

### Storage

Storage:

Store at -20°C. Avoid exposure to light. Stable for one year after shipment.

Storage Buffer:

PBS with 50% Glycerol, 0.05% Proclin300, 0.5% BSA, pH 7.3.

Aliquoting is unnecessary for -20°C storage

For technical support and original validation data for this product please contact:

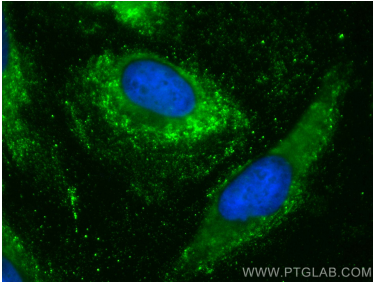
T: 4006900926

E: [Proteintech-CN@ptglab.com](mailto:Proteintech-CN@ptglab.com)

W: [ptgcn.com](http://ptgcn.com)

**This product is exclusively available under Proteintech Group brand and is not available to purchase from any other manufacturer.**

## Selected Validation Data



Immunofluorescent analysis of (-20°C Methanol) fixed HeLa cells using CoraLite® Plus 488 CYP20A1 antibody (CL488-67433, Clone: 2A9E2) at dilution of 1:200.