

For Research Use Only

CoraLite® Plus 488-conjugated MAT1A Monoclonal antibody

Catalog Number: CL488-67408



Basic Information

Catalog Number:

CL488-67408

Size:

1000 ug/ml

Source:

Mouse

Isotype:

IgG2a

Immunogen Catalog Number:

AG3076

GenBank Accession Number:

BC018359

GeneID (NCBI):

4143

UNIPROT ID:

Q00266

Full Name:

methionine adenosyltransferase I,
alpha

Calculated MW:

395 aa, 44 kDa

Observed MW:

49 kDa

Purification Method:

Protein A purification

CloneNo.:

2F1C1

Recommended Dilutions:

IF/ICC 1:50-1:500

Excitation/Emission maxima
wavelengths:

493 nm / 522 nm

Applications

Tested Applications:

IF/ICC, FC (Intra)

Species Specificity:

human, mouse, rat

Positive Controls:

IF/ICC : HeLa cells,

Background Information

Methionine adenosyltransferase (MAT) is the enzyme that catalyzes the synthesis of S-adenosylmethionine (AdoMet), the main donor of methyl groups in the cell. In mammals MAT is encoded by two different genes, MAT1A and MAT2A. MAT1A is expressed only in the mature liver whereas fetal hepatocytes, extrahepatic tissues and liver cancer cells express MAT2A.

Storage

Storage:

Store at -20°C. Avoid exposure to light. Stable for one year after shipment.

Storage Buffer:

PBS with 50% Glycerol, 0.05% Proclin300, 0.5% BSA, pH 7.3.

Aliquoting is unnecessary for -20°C storage

For technical support and original validation data for this product please contact:

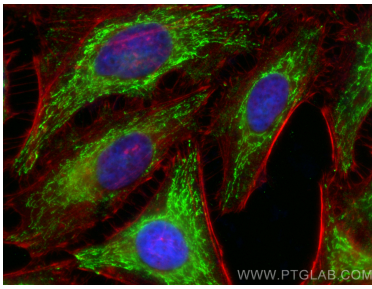
T: 4006900926

E: Proteintech-CN@ptglab.com

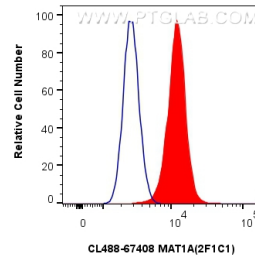
W: ptgcn.com

This product is exclusively available under Proteintech Group brand and is not available to purchase from any other manufacturer.

Selected Validation Data



Immunofluorescent analysis of (-20°C Ethanol) fixed HeLa cells using Coralite® Plus 488 MAT1A antibody (CL488-67408, Clone: 2F1C1) at dilution of 1:200, CL594-Phalloidin (red).



1x10⁶ HeLa cells were intracellularly stained with 0.4 ug Coralite® Plus 488-conjugated MAT1A Monoclonal antibody (CL488-67408, Clone:2F1C1) (red), or 0.4 ug Isotype Control (CL488-66360-2) (blue). Cells were fixed with 4% PFA and permeabilized with Flow Cytometry Perm Buffer (PF00011-C).