

For Research Use Only

CoraLite® Plus 488-conjugated VEGFR2/KDR Monoclonal antibody



Catalog Number: CL488-67407

Basic Information

Catalog Number:

CL488-67407

Size:

1000 µg/ml

Source:

Mouse

Isotype:

IgG1

Immunogen Catalog Number:

AG24589

GenBank Accession Number:

BC131822

GeneID (NCBI):

3791

UNIPROT ID:

P35968

Full Name:

kinase insert domain receptor (a type III receptor tyrosine kinase)

Calculated MW:

1356 aa, 152 kDa

Observed MW:

230 kDa

Purification Method:

Protein G purification

CloneNo.:

1G2A8

Excitation/Emission maxima wavelengths:

493 nm / 522 nm

Applications

Tested Applications:

FC

Species Specificity:

Human

Background Information

KDR, also named as VEGFR-2, FLK1 and CD309, is a receptor for VEGF or VEGFC. KDR which belongs to the protein kinase superfamily, has a tyrosine-protein kinase activity. The VEGF-kinase ligand/receptor signaling system plays a key role in vascular development and regulation of vascular permeability. In case of HIV-1 infection, the interaction with extracellular viral Tat protein seems to enhance angiogenesis in Kaposi's sarcoma lesions. KDR functions as the main mediator of VEGF-induced endothelial proliferation, survival, migration, tubular morphogenesis and sprouting. Mutations of this gene are implicated in infantile capillary hemangiomas.

Storage

Storage:

Store at -20°C. Avoid exposure to light. Stable for one year after shipment.

Storage Buffer:

PBS with 50% Glycerol, 0.05% Proclin300, 0.5% BSA, pH 7.3.

Aliquoting is unnecessary for -20°C storage

For technical support and original validation data for this product please contact:

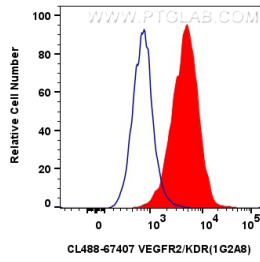
T: 4006900926

E: Proteintech-CN@ptglab.com

W: ptgcn.com

This product is exclusively available under Proteintech Group brand and is not available to purchase from any other manufacturer.

Selected Validation Data



1x10⁶ HUVEC cells were intracellularly stained with 0.8 ug CoraLite® Plus 488 Anti-Human VEGFR2/KDR (CL488-67407, Clone:1G2A8)(red), or 0.8 ug CoraLite® Plus 488 Mouse IgG1 Isotype Control (MOPC-21) (CL488-65124, Clone: MOPC-21) (blue). Cells were not fixed.