

For Research Use Only

# CoraLite® Plus 488-conjugated CCT5 Monoclonal antibody



Catalog Number: **CL488-67400**

## Basic Information

Catalog Number:

**CL488-67400**

Size:

**1000 µg/ml**

Source:

**Mouse**

Isotype:

**IgG1**

Immunogen Catalog Number:

**AG21421**

GenBank Accession Number:

**BC035499**

GeneID (NCBI):

**22948**

UNIPROT ID:

**P48643**

Full Name:

**chaperonin containing TCP1, subunit  
5 (epsilon)**

Calculated MW:

**541 aa, 60 kDa**

Observed MW:

**60 kDa**

Purification Method:

**Protein G purification**

CloneNo.:

**1B12E10**

Recommended Dilutions:

**IF/ICC 1:50-1:500**

Excitation/Emission maxima

**wavelengths:**

**493 nm / 522 nm**

## Applications

Tested Applications:

**IF/ICC, FC (Intra)**

Species Specificity:

**human, mouse, rat**

Positive Controls:

**IF/ICC : HepG2 cells,**

## Background Information

### Storage

Storage:

**Store at -20°C. Avoid exposure to light. Stable for one year after shipment.**

Storage Buffer:

**PBS with 50% Glycerol, 0.05% Proclin300, 0.5% BSA, pH 7.3.**

**Aliquoting is unnecessary for -20°C storage**

For technical support and original validation data for this product please contact:

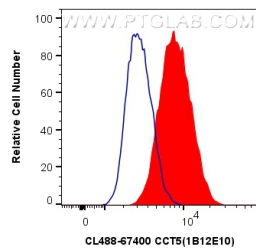
T: 4006900926

E: [Proteintech-CN@ptglab.com](mailto:Proteintech-CN@ptglab.com)

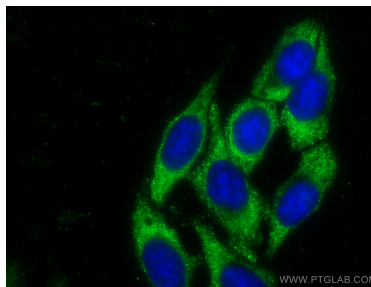
W: [ptgcn.com](http://ptgcn.com)

**This product is exclusively available under Proteintech Group brand and is not available to purchase from any other manufacturer.**

## Selected Validation Data



1X10<sup>6</sup> HepG2 cells were intracellularly stained with 0.8 ug CoraLite® Plus 488 Anti-Human CCT5 (CL488-67400, Clone:1B12E10) (red), or 0.8 ug CoraLite® Plus 488 Mouse IgG1 Isotype Control (MOPC-21) (CL488-65124, Clone: MOPC-21) (blue). Cells were fixed with 4% PFA and permeabilized with Flow Cytometry Perm Buffer (PF00011-C).



Immunofluorescent analysis of (-20°C Ethanol) fixed HepG2 cells using CoraLite® Plus 488 CCT5 antibody (CL488-67400, Clone: 1B12E10) at dilution of 1:200.