

For Research Use Only

CoraLite® Plus 488-conjugated PPP4R1 Monoclonal antibody



Catalog Number: **CL488-67392**

Basic Information

Catalog Number:

CL488-67392

Size:

1000 µg/ml

Source:

Mouse

Isotype:

IgG1

Immunogen Catalog Number:

AG26750

GenBank Accession Number:

BC060829

GeneID (NCBI):

9989

UNIPROT ID:

Q8TF05

Full Name:

**protein phosphatase 4, regulatory
subunit 1**

Calculated MW:

107 kDa

Observed MW:

120-130 kDa

Purification Method:

Protein G purification

CloneNo.:

3D12G12

Recommended Dilutions:

IF-P 1:50-1:500

Excitation/Emission maxima
wavelengths:

493 nm / 522 nm

Applications

Tested Applications:

IF-P

Species Specificity:

Human, Mouse, Rat

Positive Controls:

IF-P : human liver cancer tissue,

Background Information

Storage

Storage:

Store at -20°C. Avoid exposure to light.

Storage Buffer:

PBS with 50% Glycerol, 0.05% Proclin300, 0.5% BSA, pH 7.3.

Aliquoting is unnecessary for -20°C storage

For technical support and original validation data for this product please contact:

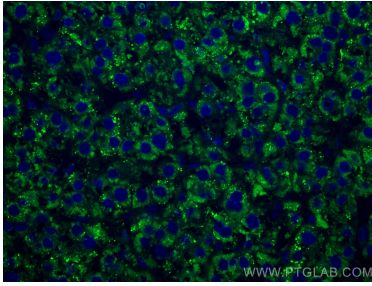
T: 4006900926

E: Proteintech-CN@ptglab.com

W: ptgcn.com

This product is exclusively available under Proteintech Group brand and is not available to purchase from any other manufacturer.

Selected Validation Data



Immunofluorescent analysis of (4% PFA) fixed human liver cancer tissue using CoraLite® Plus 488 PPP4R1 antibody (CL488-67392, Clone: 3D12G12) at dilution of 1:200.