

For Research Use Only

CoraLite® Plus 488-conjugated TH1L Monoclonal antibody



Catalog Number: CL488-67380

Basic Information

Catalog Number:

CL488-67380

Size:

1000 µg/ml

Source:

Mouse

Isotype:

IgG2a

Immunogen Catalog Number:

AG24894

GenBank Accession Number:

BC014952

GeneID (NCBI):

51497

UNIPROT ID:

Q8IXH7

Full Name:

TH1-like (Drosophila)

Calculated MW:

66 kDa

Purification Method:

Protein A purification

CloneNo.:

1A10G2

Recommended Dilutions:

IF 1:50-1:500

Excitation/Emission maxima

wavelengths:

493 nm / 522 nm

Applications

Tested Applications:

IF/ICC

Species Specificity:

Human, mouse, rat

Positive Controls:

IF : HeLa cells,

Background Information

Storage

Storage:

Store at -20°C. Avoid exposure to light.

Storage Buffer:

PBS with 50% Glycerol, 0.05% Proclin300, 0.5% BSA, pH 7.3.

Aliquoting is unnecessary for -20°C storage

For technical support and original validation data for this product please contact:

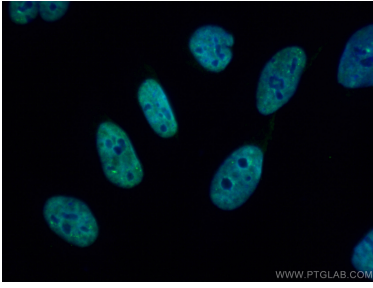
T: 4006900926

E: Proteintech-CN@ptglab.com

W: ptgcn.com

This product is exclusively available under Proteintech Group brand and is not available to purchase from any other manufacturer.

Selected Validation Data



Immunofluorescent analysis of (4% PFA) fixed HeLa cells using CoraLite® Plus 488-conjugated TH1L antibody (CL488-67380, Clone: 1A10G2) at dilution of 1:100.