

For Research Use Only



# CoraLite® Plus 488-conjugated ANAPC5 Monoclonal antibody

Catalog Number: **CL488-67348**

## Basic Information

Catalog Number:

**CL488-67348**

Size:

**1000 µg/ml**

Source:

**Mouse**

Isotype:

**IgG1**

Immunogen Catalog Number:

**AG7409**

GenBank Accession Number:

**BC001081**

GeneID (NCBI):

**51433**

UNIPROT ID:

**Q9UJX4**

Full Name:

**anaphase promoting complex subunit 5**

**5**

Calculated MW:

**85 kDa**

Observed MW:

**85 kDa, 72 kDa**

Purification Method:

**Protein G purification**

CloneNo.:

**2A7G5**

Recommended Dilutions:

**IF-P 1:50-1:500**

Excitation/Emission maxima

**wavelengths:**

**493 nm / 522 nm**

## Applications

Tested Applications:

**IF-P**

Species Specificity:

**Human, Mouse, Rat**

Positive Controls:

**IF-P : human breast cancer tissue,**

## Background Information

### Storage

Storage:

**Store at -20°C. Avoid exposure to light.**

Storage Buffer:

**PBS with 50% Glycerol, 0.05% Proclin300, 0.5% BSA, pH 7.3.**

**Aliquoting is unnecessary for -20°C storage**

For technical support and original validation data for this product please contact:

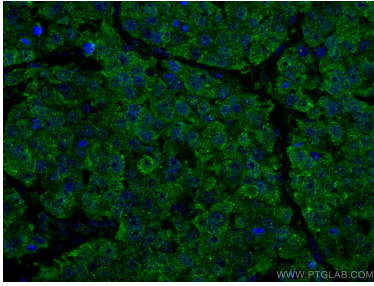
T: 4006900926

E: [Proteintech-CN@ptglab.com](mailto:Proteintech-CN@ptglab.com)

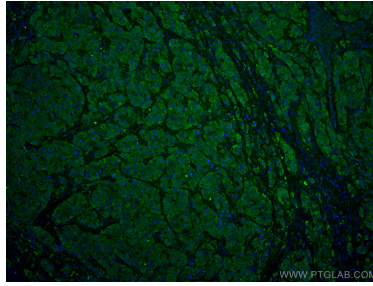
W: [ptgcn.com](http://ptgcn.com)

**This product is exclusively available under Proteintech Group brand and is not available to purchase from any other manufacturer.**

## Selected Validation Data



Immunofluorescent analysis of (4% PFA) fixed human breast cancer tissue using CoraLite® Plus 488 ANAPC5 antibody (CL488-67348, Clone: 2A7G5) at dilution of 1:200.



Immunofluorescent analysis of (4% PFA) fixed human breast cancer tissue using CoraLite® Plus 488 ANAPC5 antibody (CL488-67348, Clone: 2A7G5) at dilution of 1:200.