

CoraLite® Plus 488-conjugated ATG7 Monoclonal antibody

Catalog Number: **CL488-67341**

Basic Information

Catalog Number: CL488-67341	GenBank Accession Number: BC000091	Purification Method: Protein A purification
Size: 1000 µg/ml	GeneID (NCBI): 10533	CloneNo.: 2B5A10
Source: Mouse	UNIPROT ID: O95352	Recommended Dilutions: IF/ICC 1:50-1:500
Isotype: IgG2a	Full Name: ATG7 autophagy related 7 homolog (S. cerevisiae)	Excitation/Emission maxima wavelengths: 493 nm / 522 nm
Immunogen Catalog Number: AG29172	Calculated MW: 78 kDa	
	Observed MW: 68-78 kDa	

Applications

Tested Applications: IF/ICC	Positive Controls: IF/ICC : HepG2 cells, HeLa cells
Species Specificity: Human, Mouse, Rat, Pig	

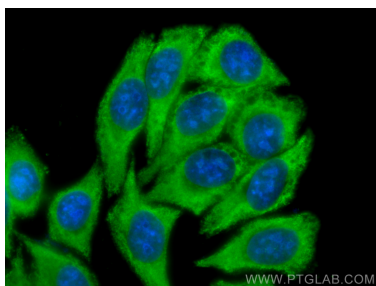
Background Information

Atg7 is an E1-like enzyme that is specifically involved in autophagosome formation and is essential for autophagy. As an autophagic-related protein it is required for linking to Atg12, Atg5 and Atg8, which are essential for Atg conjugation and autophagosome formation. Atg7 has been reported as an important regulator of autophagy with starvation-induced or chemotherapeutic agent treatment. The high expression level of ATG7 is related to the survival of patients with breast cancer. There are several isoforms of ATG7 protein ranged from 68 kDa to 78 kDa.

Storage

Storage:
Store at -20°C. Avoid exposure to light. Stable for one year after shipment.
Storage Buffer:
PBS with 50% Glycerol, 0.05% Proclin300, 0.5% BSA, pH 7.3.
Aliquoting is unnecessary for -20°C storage

Selected Validation Data



Immunofluorescent analysis of (-20°C Methanol) fixed HepG2 cells using CoraLite® Plus 488 ATG7 antibody (CL488-67341, Clone: 2B5A10) at dilution of 1:200.