

For Research Use Only

# CoraLite® Plus 488-conjugated LAMR1/RPSA Monoclonal antibody

Catalog Number:CL488-67324



## Basic Information

Catalog Number:

CL488-67324

Size:

1000 ug/ml

Source:

Mouse

Isotype:

IgM

Immunogen Catalog Number:

AG6190

GenBank Accession Number:

BC050688

GeneID (NCBI):

3921

UNIPROT ID:

P08865

Full Name:

ribosomal protein SA

Calculated MW:

33 kDa

Observed MW:

37-40 kDa

Purification Method:

Thiophilic affinity chromatograph

CloneNo.:

2A9A1

Recommended Dilutions:

IF/ICC 1:50-1:500

Excitation/Emission maxima  
wavelengths:

493 nm / 522 nm

## Applications

Tested Applications:

IF/ICC

Species Specificity:

human, mouse, rat

Positive Controls:

IF/ICC : A549 cells,

## Background Information

The ribosomal protein SA (RPSA), previously named 67 kD laminin receptor(67LR), 37 kD laminin receptor precursor (37LRP) and p40 ribosome-associated protein, is a multifunctional protein, that plays a role in a number of pathological processes, such as cancer and prion diseases. It is overexpressed in various cancer cell lines, and the level of the laminin receptor transcript is higher in colon carcinoma tissue and lung cancer cell line than their normal counterparts.

## Storage

Storage:

Store at -20°C. Avoid exposure to light. Stable for one year after shipment.

Storage Buffer:

PBS with 50% Glycerol, 0.05% Proclin300, 0.5% BSA, pH 7.3.

Aliquoting is unnecessary for -20°C storage

For technical support and original validation data for this product please contact:

T: 4006900926

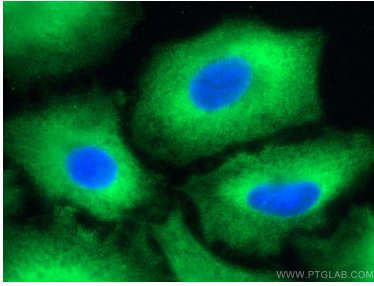
E: [Proteintech-CN@ptglab.com](mailto:Proteintech-CN@ptglab.com)

W: [ptgcn.com](http://ptgcn.com)

This product is exclusively available under Proteintech Group brand and is not available to purchase from any other manufacturer.

---

## Selected Validation Data



Immunofluorescent analysis of (-20°C Methanol)  
fixed A549 cells using CoraLite® Plus 488  
LAMR1/RPSA antibody (CL488-67324, Clone: 2A9A1  
) at dilution of 1:200.