

For Research Use Only

CoraLite® Plus 488-conjugated USP8 Monoclonal antibody

Catalog Number: CL488-67321

Featured Product



Basic Information

Catalog Number:

CL488-67321

Source:

Mouse

Isotype:

IgG1

Immunogen Catalog Number:

AG27104

GenBank Accession Number:

BC110590

GeneID (NCBI):

9101

UNIPROT ID:

P40818

Full Name:

ubiquitin specific peptidase 8

Calculated MW:

1118 aa, 128 kDa

Observed MW:

128 kDa

Purification Method:

Protein G purification

CloneNo.:

1E12E3

Recommended Dilutions:

IF/ICC: 1:50-1:500

FC (Intra): 0.80 ug per 10⁶ cells in a 100 µl suspension

Excitation/Emission maxima wavelengths:

493 nm / 522 nm

Applications

Tested Applications:

IF/ICC, FC (Intra)

Species Specificity:

human, mouse

Positive Controls:

IF/ICC : HeLa cells,

FC (Intra) : HeLa cells,

Background Information

Storage

Storage:

Store at -20°C. Avoid exposure to light. Stable for one year after shipment.

Storage Buffer:

PBS with 50% glycerol, 0.05% Proclin300, 0.5% BSA, pH7.3

Aliquoting is unnecessary for -20°C storage

For technical support and original validation data for this product please contact:

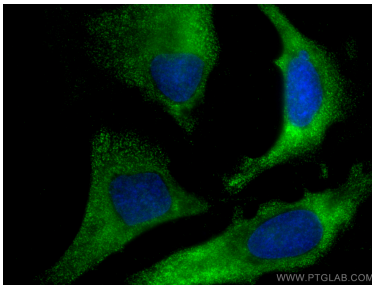
T: 4006900926

E: Proteintech-CN@ptglab.com

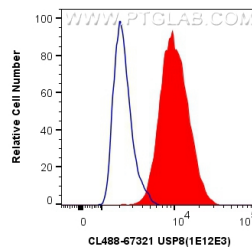
W: ptgcn.com

This product is exclusively available under Proteintech Group brand and is not available to purchase from any other manufacturer.

Selected Validation Data



Immunofluorescent analysis of (-20°C Ethanol) fixed HeLa cells using CoraLite® Plus 488 USP8 antibody (CL488-67321, Clone: 1E12E3) at dilution of 1:200.



1X10⁶ HeLa cells were intracellularly stained with 0.8 ug CoraLite® Plus 488 Anti-Human USP8 (CL488-67321, Clone:1E12E3) (red), or 0.8 ug CoraLite® Plus 488 Mouse IgG1 Isotype Control (MOPC-21) (CL488-65124, Clone: MOPC-21) (blue). Cells were fixed with 4% PFA and permeabilized with Flow Cytometry Perm Buffer.